



No.66 Gongzi 1st Rd. Chuansing Ind. Park,  
Shenkang, Changhua 50971, Taiwan  
Tel : +886 4 7988 100  
Fax : +886 4 7988 110  
E-mail : sales@ppi-4safe.com

**Pacific Precise International Co. Ltd**



ppi4safe

Catalogue

2015 Version

Pacific Precise International Co. Ltd

## Enhancing Safety Through Partnership

A trusted partner with eye for detail,  
superior products and dedication to lasting value  
enables you to accomplish your job  
with ease and confidence.



**4Safe**  
For Your Safety  
2015 Version



[www.ppi-4safe.com](http://www.ppi-4safe.com)



# About PPI-4SAFE

Pacific Precise was founded by our President, PETER WU who has great experience in cargo control system making, especially for ratchet buckles, cam buckles, overcenter buckles, winches, hooks, webbing, etc.

About two decades ago, the first ratchet buckle manufactured in Taiwan was shipping to Europe by Pacific Precise. Since then, we research and develop series of cargo control products. In 1996, due to our effort, we were the first one in Taiwan to gain the award of ISO 9002 Certificate of Approval among all the ratchet buckle producers.

In order to make our products with good quality and cost effective in such a competitive market, we have expanded our production lines to Malaysia (1992) and china (1998). In which, the main management staff is from Taiwan or overseas.

Here in Pacific Precise, we emphasize Everything Made In House a lot. So, with regard to product quality, best pricing as well as customer service, we have own our reputation in this industry and have spread out our business to many countries such as Switzerland, England , Sweden, Ireland , Germany, Holland , France , Australia , America , Japan, etc.



1978 Taiwan Headquarters



1992 Malaysia Factory



1992 China Factory 1



1996 China Factory 2

## Our Brand Attributes

### Reliability

We will continually build up our knowledge and skills, and keep abreast with industry developments, so that we can become a resilient and competitive player.

1

### Collaborative

Together, we work with you to understand explore possibilities and new ways to achieve your vision.

2

### Craftsmanship

4Safe has a keen eye for detail and quality. We focus on small touches with big impact.

3

### Durability

Our superior products utilize the latest technology to ensure high standards.

4

## Ratchet Strap & Cam Buckle Strap

Ratchet Strap .....	<b>A-01 - A-02</b>
Cam Buckle Strap .....	<b>A-03</b>
Overcenter Buckle Straps .....	<b>A-03</b>

Ratchet Strap &  
Cam Strap

## Winch & Winch Accessories

Winch .....	<b>B-01 - B-03</b>
Winch Bars (Combination/chrome) .....	<b>B-04</b>
Winch Straps .....	<b>B-05</b>

Winch &  
Winch Accessories

## Interior Van

Cargo Bar .....	<b>C-01</b>	Cargo Net .....	<b>C-03</b>
Decking Beam .....	<b>C-01</b>	Corner Protector .....	<b>C-04</b>
Logistic Trak & Strap .....	<b>C-02 - C-03</b>	Accessories .....	<b>C-04</b>

Interior Van

## Tow Strap

Tow Strap .....	<b>D-01</b>
-----------------	-------------

Tow Strap

## Chain & Load Binder

Lever Chain Binder .....	<b>E-01</b>
Ratchet Chain Binder .....	<b>E-01</b>
Binder Chain .....	<b>E-01</b>

Chain &  
Load Binder

## Hardware

Ratchet buckles .....	<b>F-01 - F-07</b>	Flat Hooks .....	<b>F-32 - F-40</b>	chain and hooks .....	<b>F-22</b>
Cam buckles .....	<b>F-08 - F-11</b>	Snap Hook .....	<b>F-14 - F-17</b>	others .....	<b>F-21 - F-23</b>
Overcenter buckles .....	<b>F-12 - F-13</b>	Forged Hooks .....	<b>F-18 - F-20</b>		
Wire Hooks .....	<b>F-08</b>	One Way buckles .....	<b>F-36 - F-37</b>		

Hardware

## Lifting Slings

Webbing Sling .....	<b>G-01</b>
Round Sling .....	<b>G-01</b>

Lifting Slings

## Rope

Rope .....	<b>H-01</b>
------------	-------------

Rope

## Height Safety

Harness .....	<b>I-01 - I-07</b>	Anchor .....	<b>I-08</b>	Self-Retracting Lifelines .....	<b>I-10</b>
Climbing harness .....	<b>I-06</b>	Beamer .....	<b>I-08</b>	Landyard .....	<b>I-11</b>
Lanyard .....	<b>I-08</b>	Roof Kit .....	<b>I-08</b>		
Lifeline .....	<b>I-07</b>	Miscellaneous .....	<b>I-09</b>		

Height Safety

## Ratchet Strap

### 1" Ratchet Strap

- 1" A1001AA Ratchet with S Hook
- B/S: 1,200 lbs
- Available in different length



#### End Fitting Options

Wire J Hook



### 1" Ratchet Strap

- 1" A1011AA Ratchet with S Hook
- B/S: 1,200 lbs
- Available in different length



#### End Fitting Options

Wire J Hook



### 1 1/2" Ratchet Strap

- 1 1/2" A1509AA Ratchet with Wire J Hook
- B/S: 4,000 kgs
- Available in different length



### 1 1/2" Ratchet Strap

- 1 1/2" A1506AA Ratchet with Wire J Hook
- B/S: 4,000 kgs
- Available in different length



### 2" Ratchet Strap

- 2" A2008AB Ratchet with Flat Hook
- B/S: 10,000 lbs
- Available in 30' length



#### End Fitting Options

Wire J Hook



### 2" Ratchet Strap

- 2" A2025AA Ratchet with Flat Hook
- B/S: 10,000 lbs
- Available in 30' length



#### End Fitting Options

Wire J Hook



## Ratchet Strap

### 2" Ratchet Strap

- 2" A2033BC Ratchet with Flat Hook
- B/S: 10,000 lbs
- Available in different length

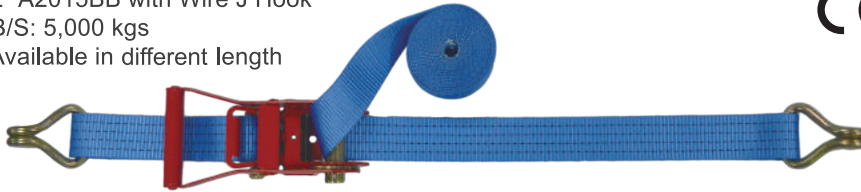


#### End Fitting Options

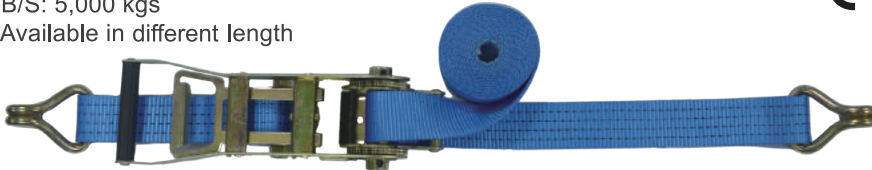
Wire J Hook



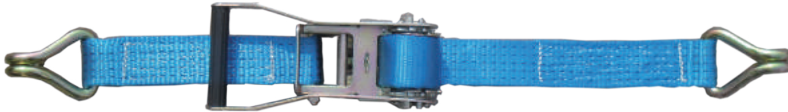
- 2" A2015BB with Wire J Hook
- B/S: 5,000 kgs
- Available in different length



- 2" A2016AB Ratchet with Wire J Hook
- B/S: 5,000 kgs
- Available in different length

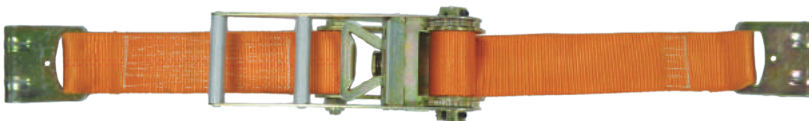


- 2" A2025AA Ratchet with Wire J Hook
- B/S: 5,000 kgs
- Available in different length



### 3" Ratchet Strap

- 3" A2301BA Ratchet with Flat Hook
- B/S: 1,5000 lbs
- Also available in different length



#### End Fitting Options

Wire J Hook



Chain & Hook



### 4" Ratchet Strap

- 4" A2404AA Ratchet with Flat Hook
- B/S: 1,5000 lbs
- Also available in different length



#### End Fitting Options

Wire J Hook



Chain & Hook



## Buckle Strap

### Cam Buckle Strap



- A4001AB Cam Buckle Strap
- B/S: 270 kgs
- Available in different length



- A4003AD Cam Buckle with S hook
- B/S: 350 kgs
- Available in different length



- A4007AA Cam Buckle with S hook
- B/S: 750 kgs
- Available in different length



- A4021AA Cam Buckle with S hook
- B/S: 800 kgs
- Available in different length



### Overcenter buckle Straps

- B/S : 1496kgs
- Flat hook standard, alternative track fittings or hooks available
- Web Material : Polyester
- Width size : 25mm
- Standard Length : 2m
- Other lengths and color as desired

#### Car Lashing



Lashing Strap for Shipping Car by sea. 25mm car lashing straps, fitted with overcenter buckle, and flat hook.

- B/S: 750kgs
- Snap hook and rave hook end fittings as standard, alternative track fittings or hooks available
- Standard length : 4.25m, other lengths are manufactured 3.25m, 5.25m or as required.
- Web Material : Polyester

#### Internal Cargo Strap

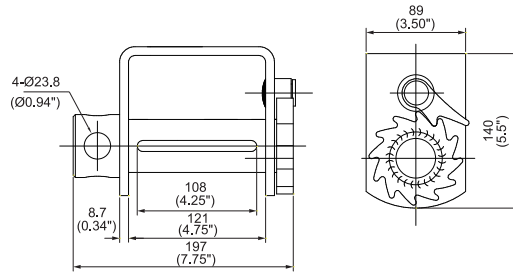


50mm internal cargo strap, fitted with overcentre buckle, closed rave hook, adjustable end with 3 bar slide and snap hook.

## Winch

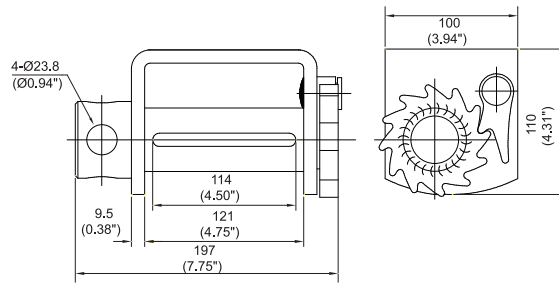
### Weld-on Winch

Standard  
Weld-on Winch  
A7001BD



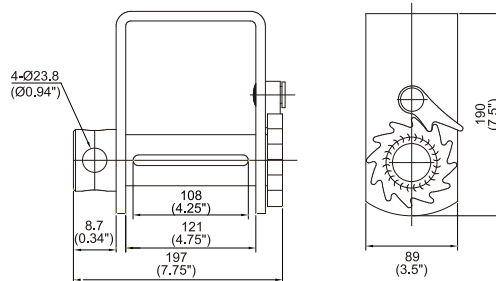
- Width : 121mm/4.75"
- B/S : 7,484kgs
- Weight : 4.36kgs

Low Profile  
Weld-on Winch  
A7042AA



- Width : 121mm/4.75"
- B/S : 7,484kgs
- Weight : 4.14kgs

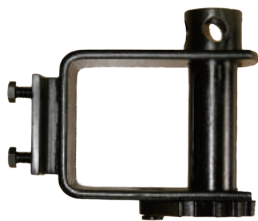
Storable  
Weld-on Winch  
A7001BE



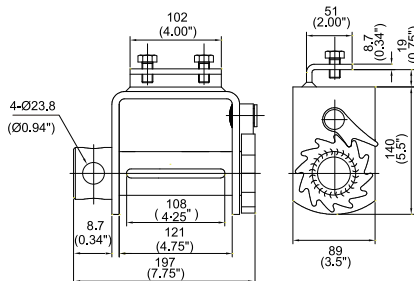
- Width : 121mm/4.75"
- B/S : 7,484kgs
- Weight : 4.50kgs

### Portable Winch

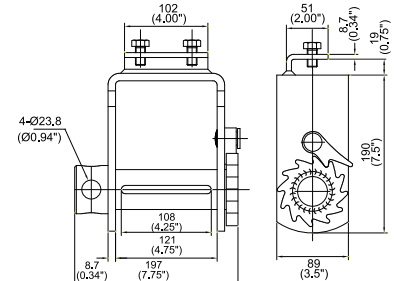
A7041AA



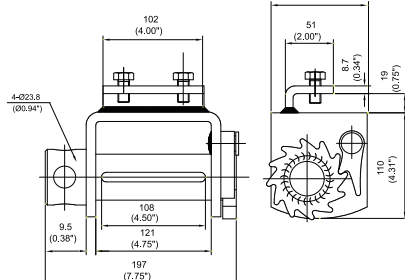
Standard  
Portable Winch



Storable  
Portable Winch



Low Profile  
Portable Winch



- Standard Portable Winch A7041AB - Width : 121mm/4.75"
- B/S : 7,484kgs
- Weight : 4.73kgs

- Low Profile Portable Winch A7001AT - Width : 121mm/4.75"
- B/S : 7,484kgs
- Weight : 4.27kgs

- Storable Portable Winch A7041AA - Width : 121mm/4.75"
- B/S : 7,484kgs
- Weight : 5kgs

## Winch

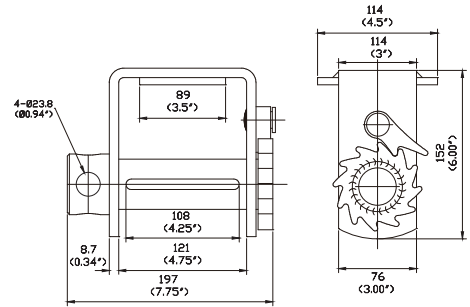
### Sliding Winch

A7001BF

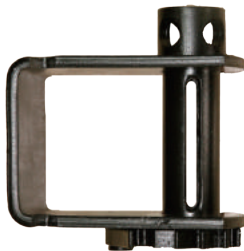


Steel Plate Sliding Winch

- Width : 121mm/4.75"
- B/S : 7,484kgs
- Weight : 4.09kgs

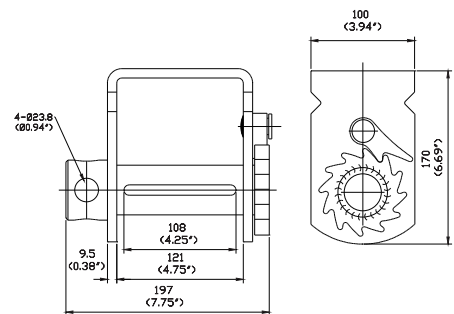


A7040AC

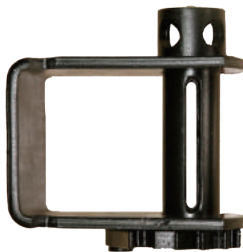


Standard Sliding Winch

- Width : 121mm/4.75"
- B/S : 7,484kgs
- Weight : 4.45kgs

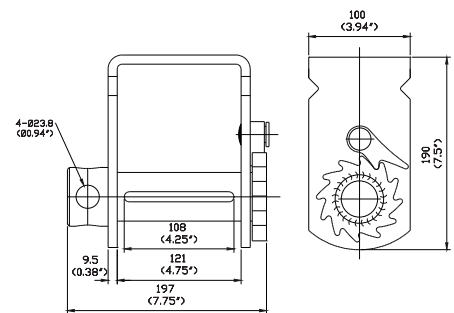


A7001BA



Storable Sliding Winch

- Width : 121mm/4.75"
- B/S : 7,484kgs
- Weight : 4.82kgs

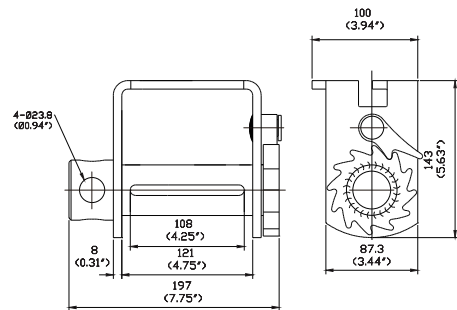


A7001AW



Double LL Sliding Winch

- Width : 121mm/4.75"
- B/S : 7,484kgs
- Weight : 3.63kgs



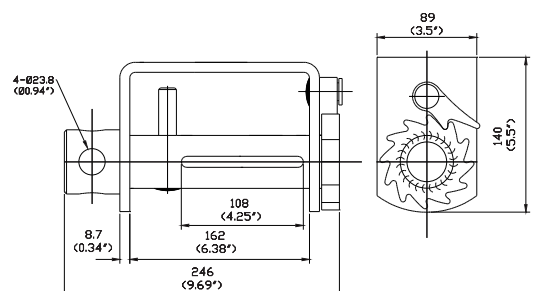
### Combination Weld-on Winch

A7001AH



Standard  
Combination  
Weld-on Winch

- Width : 162mm/6.38"
- B/S-Cable : 4535kgs
- Webbing : 7484kgs
- Weight : 4.45kgs





## Winch

Winch & Winch Accessories

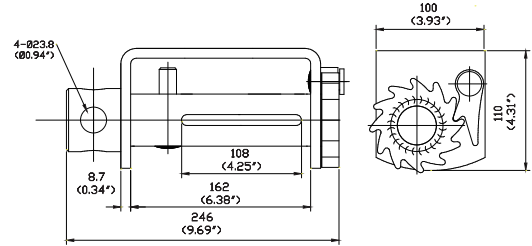
### Combination Weld-on Winch

**A7001AS**



Low Profile  
Combination  
Weld-on Winch

- Width : 162mm/6.38"
- B/S-Cable : 4535kgs
- Webbing : 7484kgs
- Weight : 4kgs



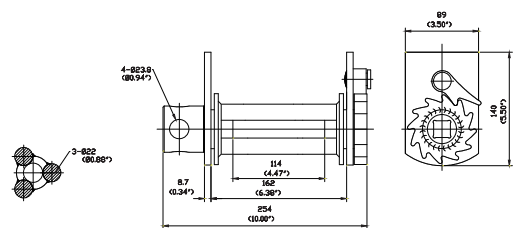
### 3-Bar Winch

**A7001AG**



Standard 3-Bar  
Frameless Leg Winch

- Width : 162mm/6.38"
- B/S : 7,484kgs
- Weight : 3.18kgs

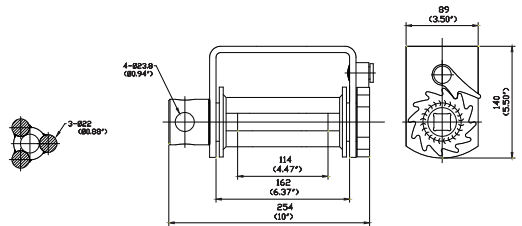


**A7001AG**



Standard 3-Bar  
Weld-on Winch

- Width : 162mm/6.38"
- B/S : 7,484kgs
- Weight : 6.32kgs

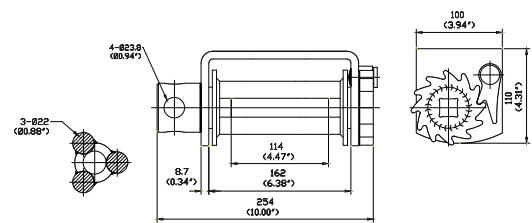


**A7001AR**



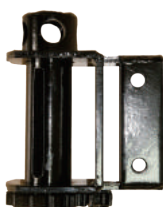
Low Profile 3-Bar  
Weld-on Winch

- Width : 162mm/6.38"
- B/S : 7,484kgs
- Weight : 6.64kgs



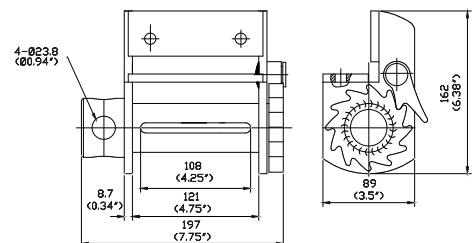
### Side Mount Bold on Winch

**A7001AK**



Side Mount Bold  
on Winch

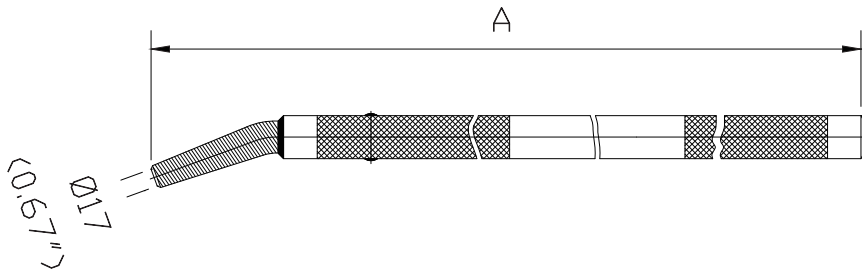
- Width : 121mm/4.75"
- B/S - Cable : 4535kgs;
- Webbing : 7484kgs
- Weight : 4.09kgs



## Winch Bar

### Standard Winch Bar

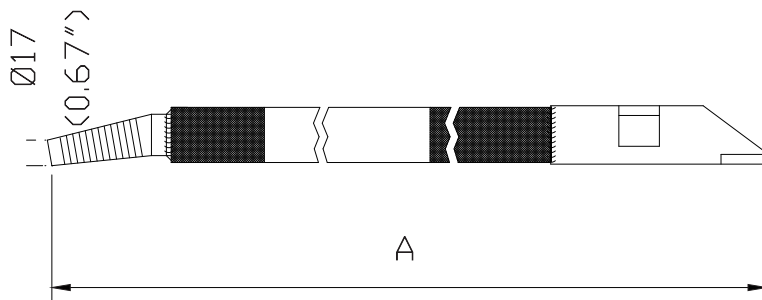
**A7100AE** - Length : 35"  
- Painted/ Chrome



P/N	A(Length)
A7100AA	33"
A7100AE	35"
A7100CA	37"
A7100DA	40"

### Combination Winch Bar Box Type End

**A7200AA** - Length : 33"  
- Painted/ Chrome



P/N	A(Length)
A7200EB	32"
A7200AA	33"
A7200BA	35"
A7200CA	37"
A7200CB	37"
A7200DA	37"

## Winch Straps

### 2" Winch Strap

2" x 27' Winch Strap w/ Flat Hook

- Webbing Breaking Strength : 5,454 kgs / 12,000 lbs
- Working Load Limit : 1,515 kgs / 3,335 lbs
- Also available in 30' and 40' lengths



Also Available w/

Wire J Hook



Flat Hook



Chain Anchor



Delta Ring



Sewn Loop



### 3" Winch Strap

3" x 27' Winch Strap w/ Flat Hook

- Webbing Breaking Strength : 8,180 kgs / 18,000 lbs
- Working Load Limit : 2,272 kgs / 5,000 lbs
- Also available in 30' and 40' lengths



Also Available w/

Wire J Hook



Flat Hook



Chain Anchor



Delta Ring



Sewn Loop



### 4" Winch Strap

4" x 27' Winch Strap w/ Flat Hook

- Webbing Breaking Strength : 9,090 kgs / 20,000 lbs
- Working Load Limit : 2,455 kgs / 5,400 lbs
- Also available in 30' and 40' lengths



Also Available w/

Wire J Hook



Flat Hook



Chain Anchor



Delta Ring



Sewn Loop





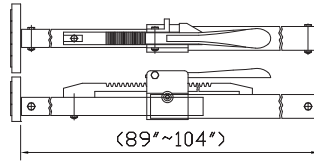
### Cargo Bar & Decking Beam

#### Cargo Bar

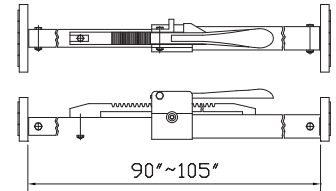
A7301AA



A7301AF



A7301AA



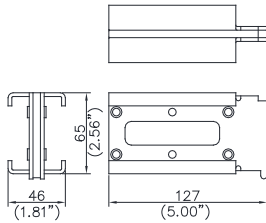
#### Decking Beam

##### Replacement Parts

A6002AA

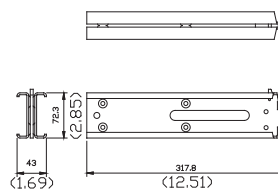


A6002AC



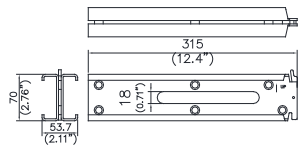
- 54mm  
- Weight: 766g

A6002AD



- 40mm  
- Weight: 1500g

A6002AA



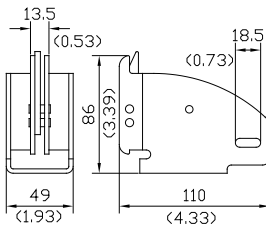
- 43mm  
- Weight: 1600g

##### Beam Accessories

A6001AA

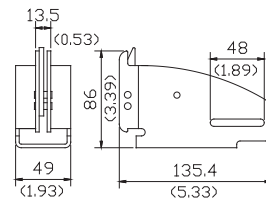


A6001AA



- 110mm  
- Weight: 420g

A6001AB



- 135mm  
- Weight: 527g

#### Logistic Track & Straps

##### Cam Buckle Strap



- A4019AA with 2" Webbing & Spring Loaded Fitting
- B/S: 2,500 lbs
- WLL: 833 lbs
- Available length: 12', 16', 20'

##### End Fitting Options



##### Ratchet Buckle Strap



- A2006AA with 2" Webbing & Spring Loaded Fitting
- B/S: 4,400 lbs
- WLL: 1,467 lbs
- Available length: 12', 16', 20'

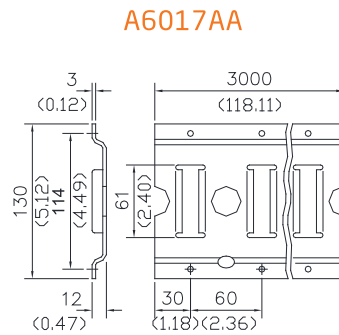
##### End Fitting Options



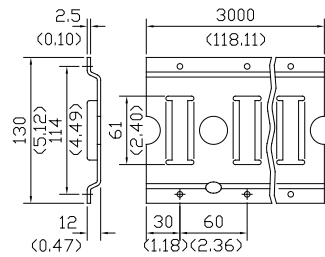
# Cargo Bar & Decking Beam

## Logistic Track

**Logistic Track 10 ft**  
A6017AA



A6017AB



A6017AA

- 61mm
- Material : Alumium
- Weight : 2.80kg

A6017AB

- 61mm
- Weight : 7.15kg

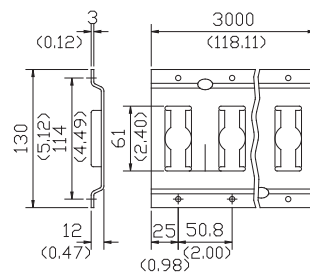
A6017BA

- 61mm
- Material : Alumium
- Weight : 2.80kg

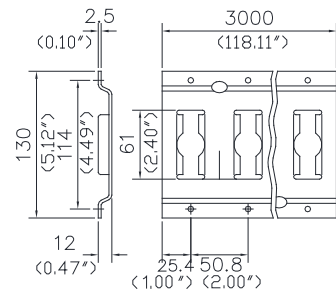
A6017BB

- 61mm
- Weight : 7.15kg

A6017BA



A6017BB



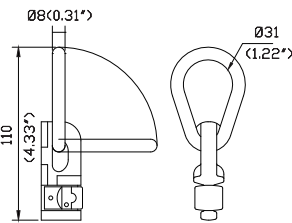
## End Fitting

**Series L track Fitting**

A6013AF

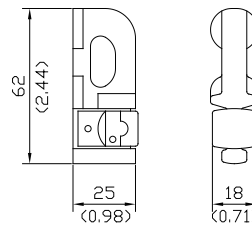


A6013AF



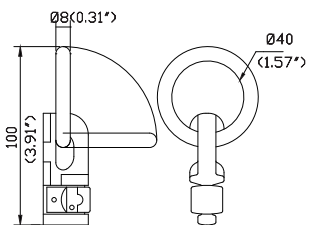
- 31mm
- B/S: 2,270 kgs

A6013AG



- 25mm
- B/S: 2,270 kgs
- Weight: 103g

A6013AE

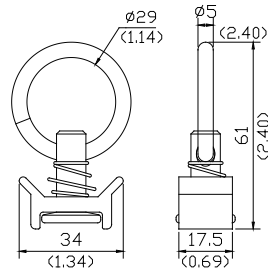


- 40mm
- B/S: 2,270 kgs

A6013AI



A6013AI

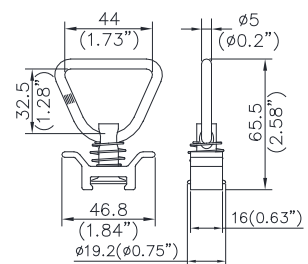


- 29mm
- B/S: 1,818 kgs
- Weight: 46g

A6013AM



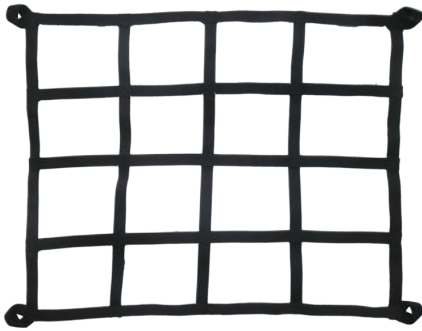
A6013AM



- 44mm
- Material: Alumium
- B/S: 1,818 kgs
- Weight: 53g

## Cargo Net & End Fitting

### Cargo Net



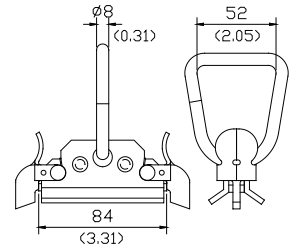
### End Fitting

#### Series E or A Fitting with Ring

A6013AH



A6013AH



- 29mm
- B/S: 2,270 kgs

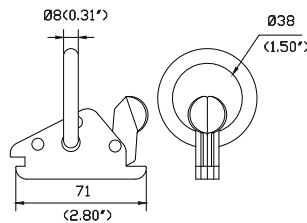
### End Fitting

#### Series E or A Fitting with Ring

A6013AA

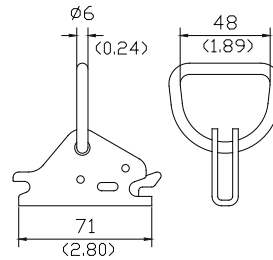


A6013AD



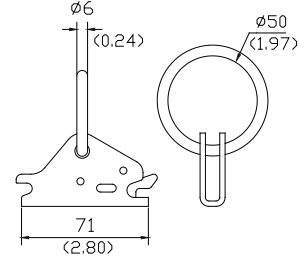
- 38mm
- B/S: 2,500 kgs
- Weight: 236g

A6013AA



- 50mm
- B/S: 1,820 kgs
- Weight: 139 g

A6013AC



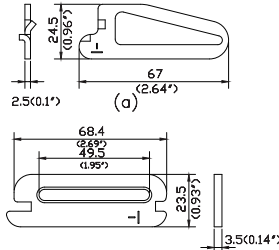
- 50mm
- B/S: 1,820 kgs
- Weight: 139 g

#### Series E or A Spring Loaded Fitting

A6004AB

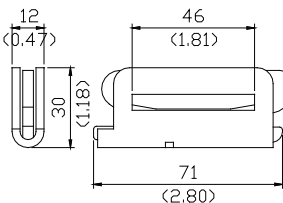


A6005AA



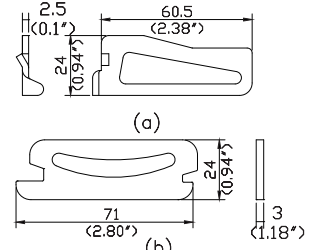
- 68mm
- B/S: 1,360 kgs
- Weight: 80g

A6007AA



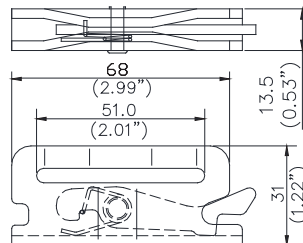
- 71mm
- B/S: 1,590 kgs
- Weight: 112g

A6011AA



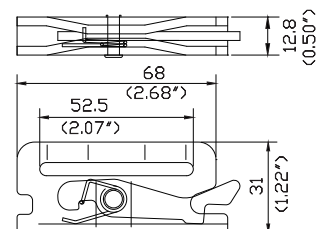
- 71mm
- B/S: 1,360 kgs
- Weight: 74g

A6004AB



- 53mm
- B/S: 2,045 kgs
- Weight: 139 g

A6004AF

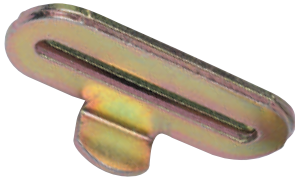


- 68mm
- B/S: 2,500 kgs
- Weight: 98g

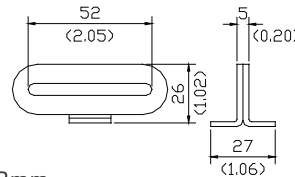
## Fitting

### Series F Butterfly Fitting

A3095AA

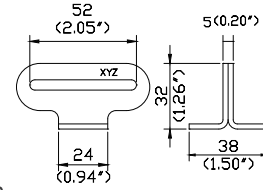


A3095AA



- 52mm
- B/S: 570 kgs
- Weight: 22g

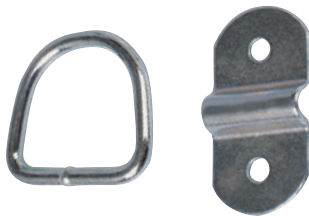
A3095AB



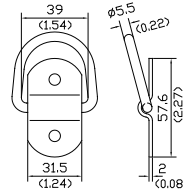
- 52mm
- B/S: 680 kgs
- Weight: 31g

### Pan Fitting

A6016AB

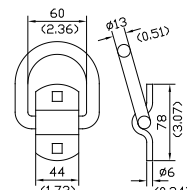


A6016AB



- 31.5mm
- B/S: 550 kgs
- Weight: 96g

A6016AC

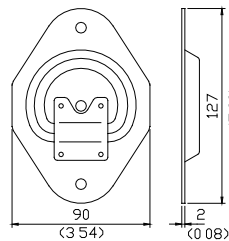


- 44mm
- B/S: 5,000 kgs
- Weight: 411g

A6016AE



A6016AE

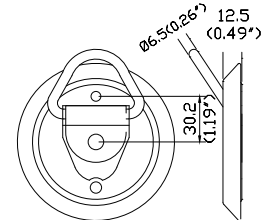


- 90mm
- B/S: 500 kgs
- Weight: 178g

A6016AA



A6016AA

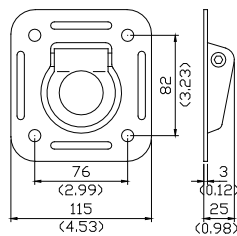


- 30.2mm
- B/S: 545 kgs
- Weight: 96g

A6016AD



A6016AD



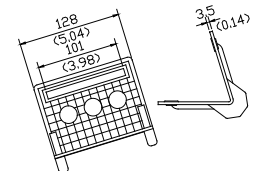
- 76mm
- B/S: 2,200 kgs
- Weight: 545g

### Corner Protector

A8001AD

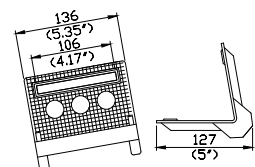


A8001AD



- A8001AD
- 101mm
- Weight: 68.5g

A8001AY



- A8001AY
- 106mm
- Weight: 102g



## Tow Strap

### 15 ft. x 2" Tow Strap w/Forged Hook

- Length: 15'
- Width: 2"
- 5,000 lb. maximum vehicle weight
- Load Capacity: 12,000 lb. webbing
- Designed for towing mid-size vehicles and Jeeps
- Other ending, lengths are available



### 30 ft. x 2" Tow Strap w/ Sewn Loop

- Length: 30'
- Width: 2"
- Load Capacity: 20,000 lb. webbing
- w/Sewn Loop
- Other length and width are available

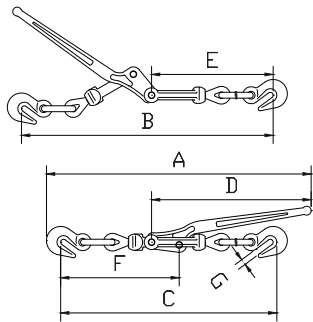




Chain & Load Binder

Chain Binder

Lever Chain Binder  
A7401AB



A7401AB

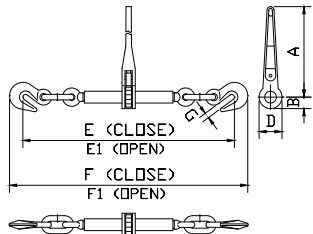
- with Grab Hook 5/16"~3/8"
- B/S:8,636kgs
- Weight: 3,700g

A7401AA

- with Grab Hook 3/8"~1/2"
- B/S:12,727kgs
- Weight:5,700g

P/N	Size(in)	破断拉力 (LBS)	mm (in)						
			A	B	C	D	E	F	G
7401AA	3/8"-1/2"	28000	720 (28.35)	680 (26.77)	560 (22.05)	430 (16.93)	330 (12.99)	320 (12.60)	16 (0.63)
7401AB	5/16"-3/8"	19000	620 (24.35)	590 (23.23)	490 (19.29)	380 (14.96)	280 (11.02)	280 (11.02)	13 (0.51)

Ratchet Chain Binder  
A7402AB



A7402AB

- with Grab Hook 5/16"~3/8"
- B/S:8,636kgs
- Weight: 4,730g

A7402AA

- with Grab Hook 3/8"~1/2"
- B/S:15,000kgs
- Weight:5,150g

P/N	Size(in)	工作拉力 (LBS)	破断拉力 (LBS)	破断拉力 (LBS)	(in)							
					A	B	D	E	E1	F	F1	G
7402AA	3/8"-1/2"	9200	18400	33000	13.92	1.30	2.60	24.13	32.13	27.04	35.04	.59
7402AB	5/16"-3/8"	5400	10800	19000	13.92	1.30	2.60	22.64	30.64	25.24	33.24	.51
7402AC	1/2"-5/8"	13000	26000	46000	13.92	1.30	2.60	26.45	34.45	30.07	38.07	.74
7402AD	1/4"-5/16"	2200	4400	7800	7.16	.89	1.77	16.22	21.26	17.79	22.83	.35

Binder Chain



5/16" Transport Chain with 5/16" Clevis Grab Hook G70

- Work Load Limit : 4,700 kgs
- G70 Compliant

5/16" Transport Chain with 5/16" Clevis Grab Hook G70

- Work Load Limit : 6,600 kgs
- G70 Compliant

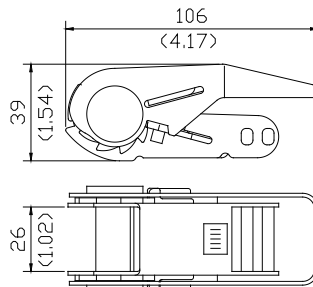
5/16" Transport Chain with 5/16" Clevis Grab Hook G70

- Work Load Limit : 11,300 kgs
- G70 Compliant

Chain & Load Binder

## Ratchet Buckle

### 1" Poly Ratchet Buckle



#### A1036AA

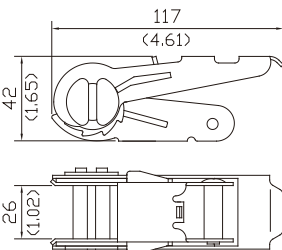
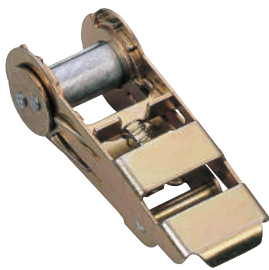
- 25mm Poly
- Design Patented
- B/S: 270 kgs
- Webbing sewing needed
- Weight: 59g

#### A1036AB

- 25mm Poly
- Design Patented
- B/S: 270 kgs
- DIY Design
- Weight: 59g

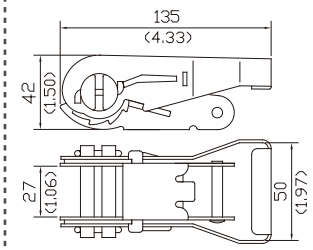
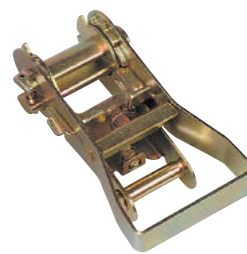
### 1" Ratchet Buckle

#### A1000AA



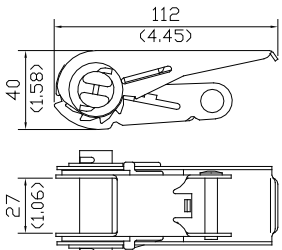
- 25mm
- B/S: 550 kgs
- Weight: 201g

#### A1033AA



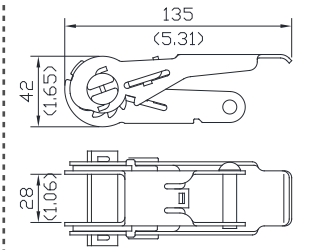
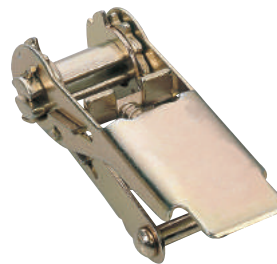
- 25mm
- B/S: 750 kgs
- Weight: 221g

#### A1001AA



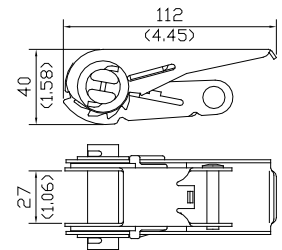
- 25mm
- B/S: 900 kgs
- Weight: 241g

#### A1002AA



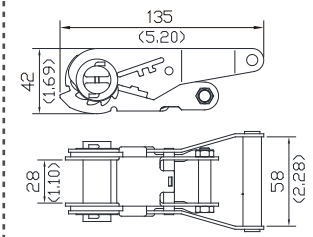
- 25mm
- B/S: 2,000 kgs
- Weight: 316g

#### A1001JA



- 25mm
- B/S: 900 kgs
- Stainless 304
- Weight: 241g

#### A1006JA

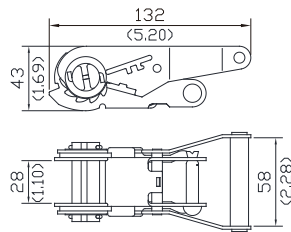


- 25mm
- B/S: 1,500 kgs
- Stainless 304
- Weight: 366g

## Ratchet Buckle

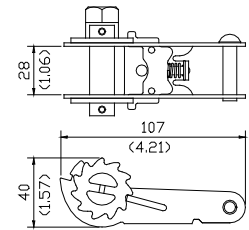
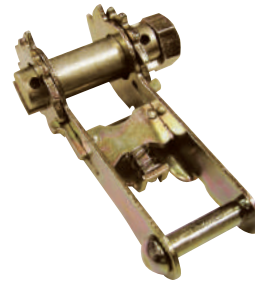
### 1" Ratchet Buckle

A1006AA



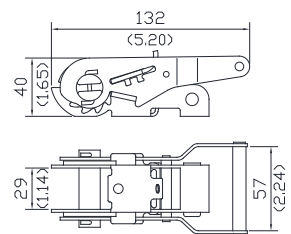
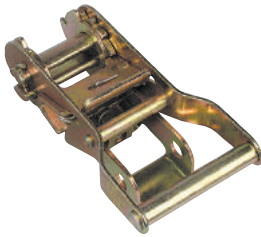
- 25mm
- B/S: 2,000 kgs
- Weight: 366g

A1009AA



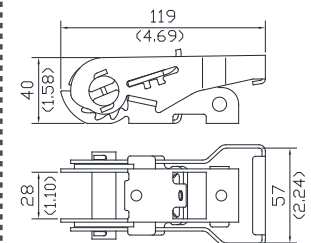
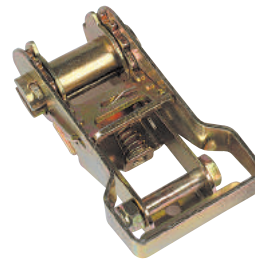
- 25mm
- B/S: 2,000 kgs
- Suitable for Star Driver 19mm
- Weight: 220g

A1011AA



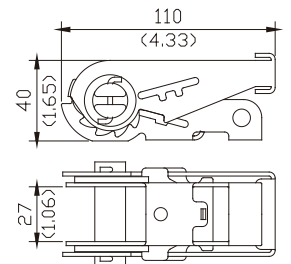
- 25mm
- B/S: 2,000 kgs
- Weight: 520g

A1032AA



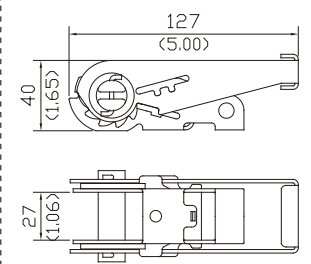
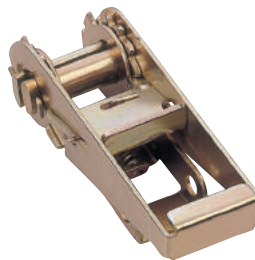
- 25mm
- B/S: 2,000 kgs
- Weight: 320g

A1061AA



- 25mm
- B/S: 2,000 kgs
- Weight: 327g

A1062AA

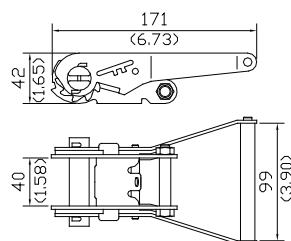
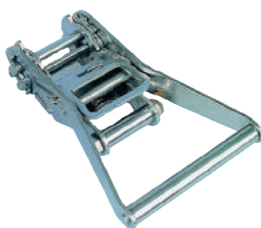


- 25mm
- B/S: 2,000 kgs
- Weight: 327g

Hardware

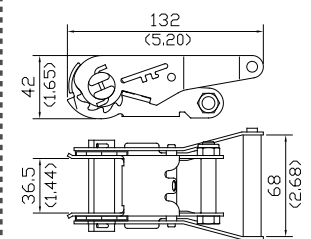
### 1.5" Ratchet Buckle

A1505JB



- 35mm
- B/S: 3,000 kgs
- Stainless
- Weight: 638g

A1503AA

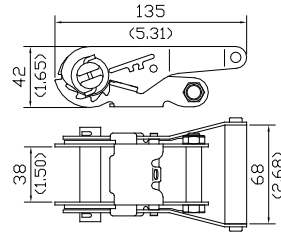
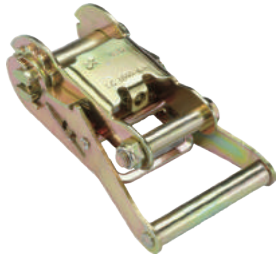


- 35mm
- B/S: 3,000 kgs
- Weight: 433g

## Ratchet Buckle

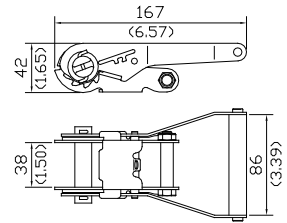
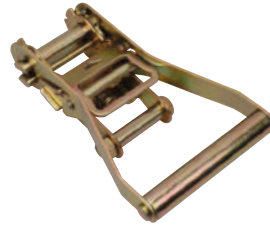
### 1.5" Ratchet Buckle

**A1506AA**



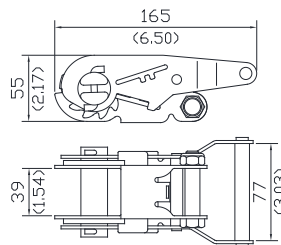
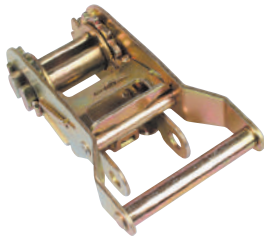
- 35mm
- B/S: 3,000 kgs
- Weight: 422g

**A1507AA**



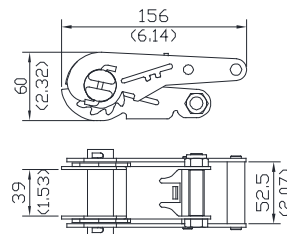
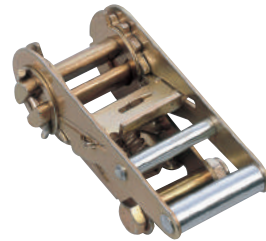
- 35mm
- B/S: 3,000 kgs
- Weight: 500g

**A1509AA**



- 35mm
- B/S: 4,000 kgs
- Weight: 817g

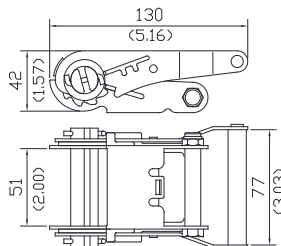
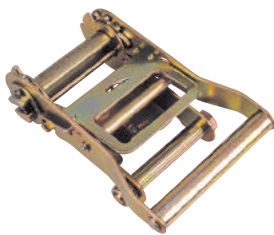
**A1502AA**



- 35mm
- B/S: 4,000 kgs
- Weight: 850g

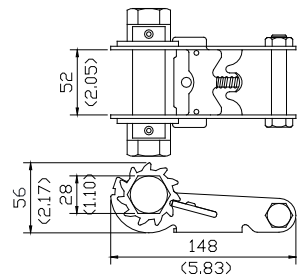
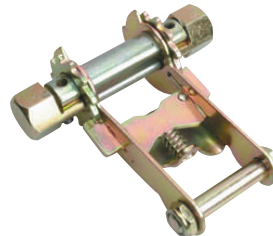
### 2" Ratchet Buckle

**A2006AA**



- 50mm
- B/S: 2,000 kgs
- Weight: 450g

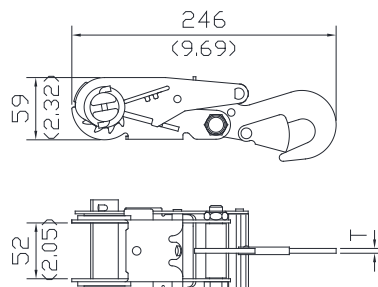
**A2007CA**



- 50mm
- B/S: 4,500 kgs
- Weight: 683g



- 50mm Heavy Duty Ratchet Buckle



**A2005NB**

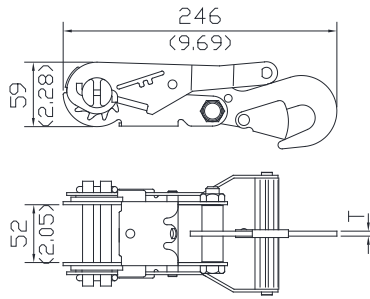
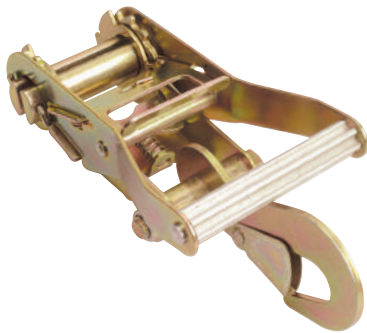
- B/S: 3,000 kgs
- Weight: 1,122g

**A2005MB**

- B/S: 5,000 kgs
- Weight: 1,157g

## Ratchet Buckle

### 2" Ratchet Buckle



- 50mm Heavy Duty Ratchet Buckle

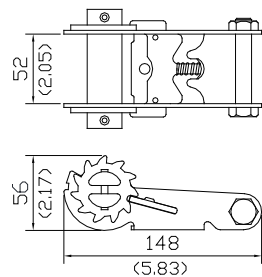
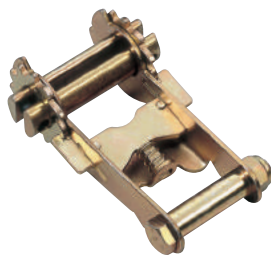
#### A2008NB

- Standard Model
- B/S: 3,000 kgs
- Weight: 1,180g

#### A2008MB

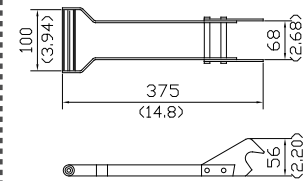
- With Safety Lock
- B/S: 5,000 kgs
- Weight: 1,145g

#### A2007BA

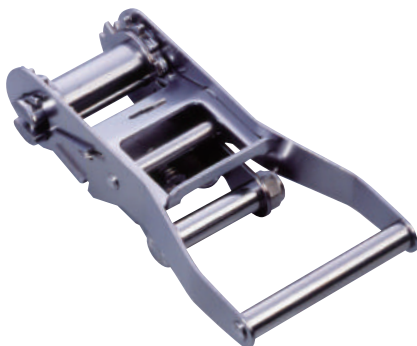


- 50mm
- B/S: 4,500 kgs
- Weight: 683g

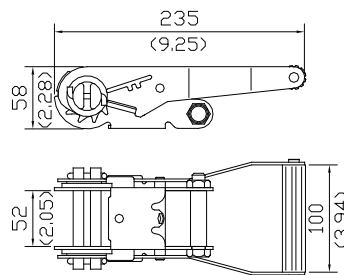
#### 6008AA



Ratchet Driver  
Weight: 906g



-Stainless SUS304



- 50mm Heavy Duty Ratchet Buckle
- B/S: 5,000 kgs
- Weight: 1,275g

#### A2002AA

- Standard Model

#### A2002AB

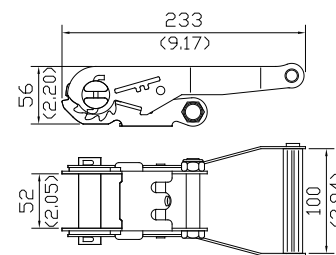
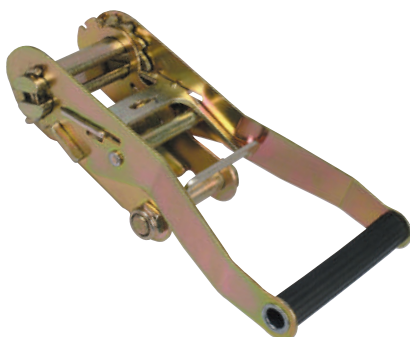
- With Safety Lock

#### A2002AC

- With Double Sprocket

#### A2002AD

- With Safety Lock and Double Sprocket



- 50mm Heavy Duty Ratchet Buckle
- B/S: 5,000 kgs
- Weight: 900g

#### A2025AA

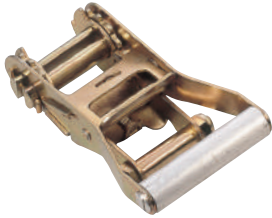
- Standard Model

#### A2025AB

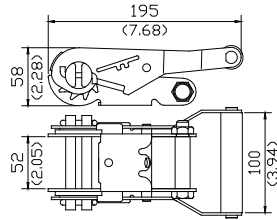
- With Safety Lock

## Ratchet Buckle

### 2" Ratchet Buckle

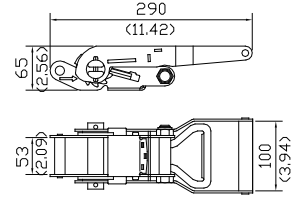


- A2008AA**  
 - Standard  
**A2008DB**  
 - With Safety Lock



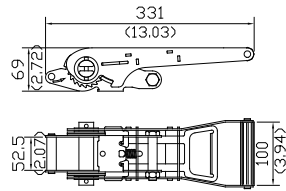
- 50mm Heavy Duty Ratchet Buckle
- B/S: 5,000 kgs
- Weight: 1,275g

**A2011AA**



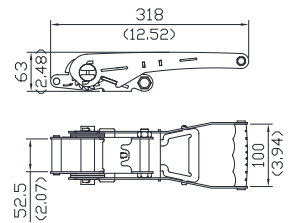
- Ergo 50mm
- B/S: 5,000 kgs
- Epoxy Surface Treatment
- Weight: 1,558g

**A2016AA**



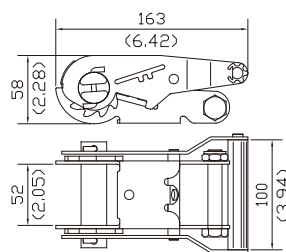
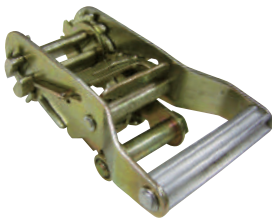
- Ergo 50mm
- B/S: 5,000 kgs
- With Safety Lock
- Weight: 1,829g

**A2016KB**



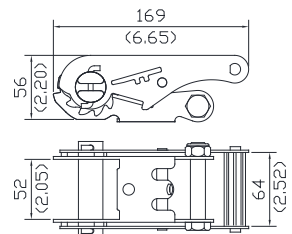
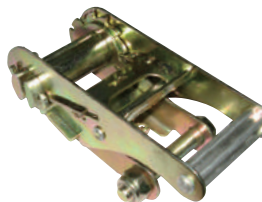
- Ergo 50mm
- With Safety Lock
- B/S: 5,000 kgs
- Weight: 1,440g

**A2020EA**



- 50mm
- B/S: 5,000 kgs
- Weight: 1,085g

**A2028EA**

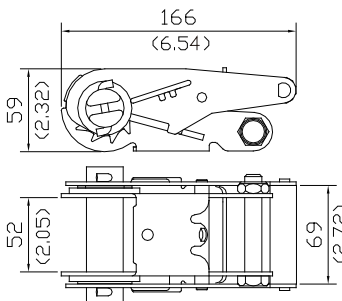


- 50mm
- B/S: 5,000 kgs
- With Safety Lock
- Weight: 1,167g

**A2005**



- 50mm Heavy Duty Ratchet Buckle with Hook



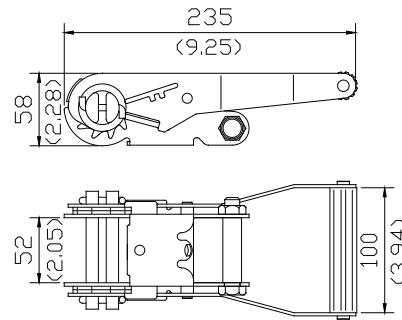
- A2005AA**
- 50mm
  - B/S: 5,000kgs
  - Weight: 1,167g

- A2005AD**
- 50mm
  - B/S: 5,000kgs
  - Weight: 1,167g

## Ratchet Buckle

### 2" Ratchet Buckle

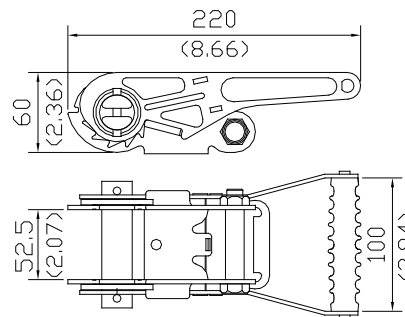
A2022



A2022EB

- 50 mm
- B/S: 5,000 kgs
- Safety Lock
- Double Sprocket
- Weight: 1,085g

A2015



A2015BB

- 50mm
- B/S: 6,000 kgs
- Weight: 1,250g

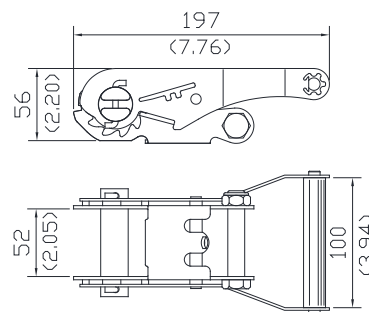
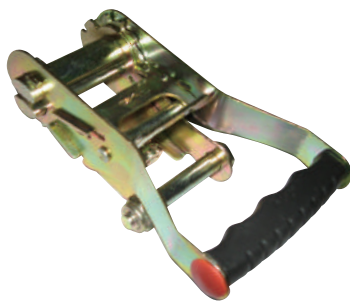
A2015BD

- 50mm
- B/S: 6,000 kgs
- Weight: 1,250g

A2015CA

- 50mm
- B/S: 6,000 kgs
- Weight: 1,250g

A2033



A2033BC

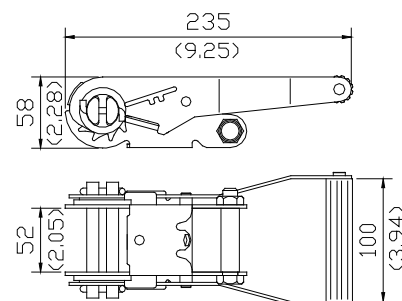
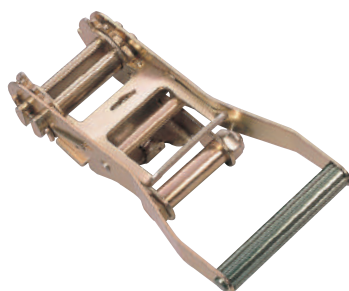
- Standard Model
- Weight: 1,275g

A2033KB

- With Safety Lock
- B/S: 5,000 kgs
- Weight: 1,275g

- 50mm Heavy Duty Ratchet Buckle
- B/S: 5,000 kgs

A2013



A2013EA

- 50mm
- B/S: 6,000 kgs
- Weight: 1,275g

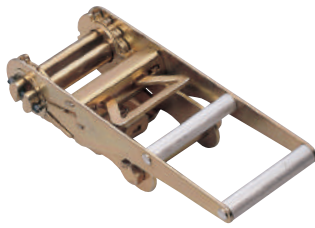
A2013EB

- 50mm
- B/S: 6,000 kgs
- Weight: 1,275g

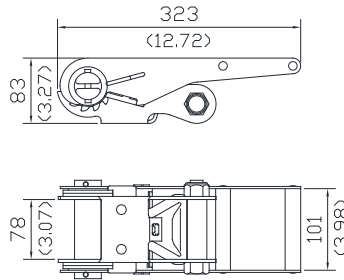
## Ratchet Buckle

### 3" Ratchet Buckle

**A2301**



- 75mm Heavy Duty Ratchet Buckle With Long Handle
- B/S: 10,000 kgs



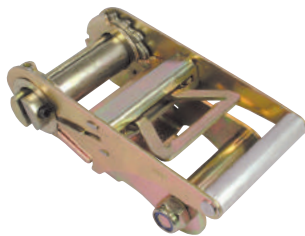
**A2301AA**

- Standard Model
- Weight: 2,800g

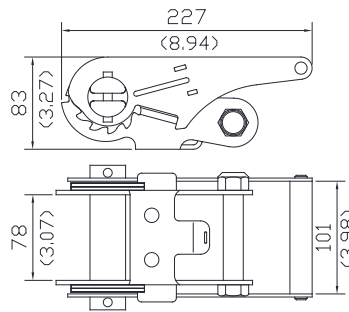
**A2301AB**

- With Safety Lock
- Weight: 2,800g

**A2305**



- 75mm Heavy Duty Ratchet Buckle With Long Handle
- B/S: 10,000 kgs



**A2305AA**

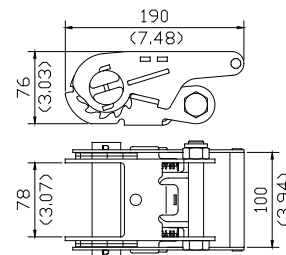
- Standard Model
- Weight: 2,500g

**A2305AB**

- With Safety Lock
- Weight: 2,500g

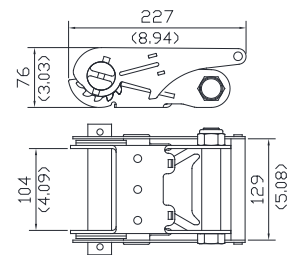
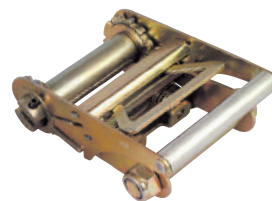
### 4" Ratchet Buckle

**A2303AA**

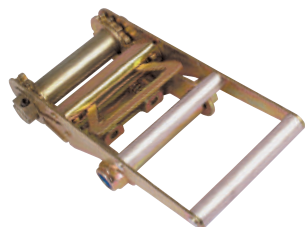


- 75mm
- B/S: 10,000 kgs
- Weight: 2,270g

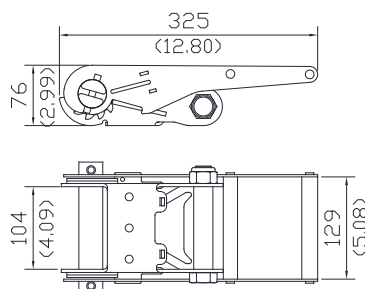
**A2405AA**



- 100mm
- B/S: 10,000 kgs
- Weight: 2,500g



- 100mm Heavy Duty Ratchet Buckle With Long Handle
- B/S: 10,000 kgs



**A2404AA**

- Standard Model
- Weight: 3,500g

**A2404AB**

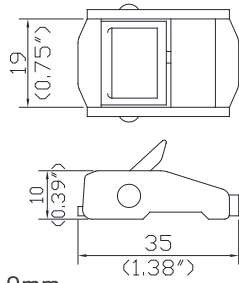
- With Safety Lock
- Weight: 3,500g



## Cam Buckle

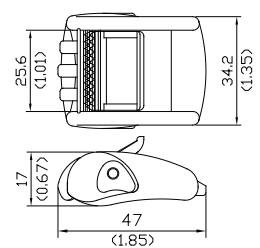
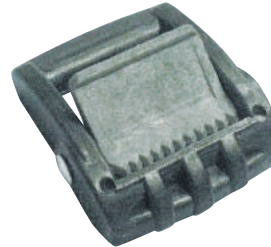
### 1" Cam Buckle

A4012AA



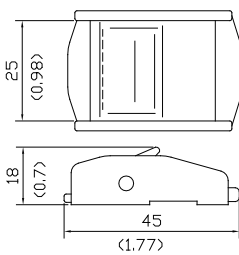
- 19mm
- B/S: 100 kgs
- Weight: 22g

A4018AA



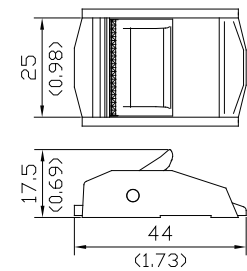
- 25mm
- B/S: 180 kgs
- Weight: 18.5g

A4001AA



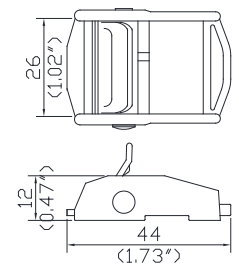
- 25mm
- B/S: 270 kgs
- Weight: 36g

A4001AB



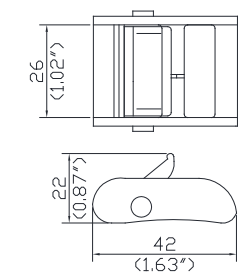
- 25mm
- B/S: 270 kgs
- Weight: 32g

A4002AA



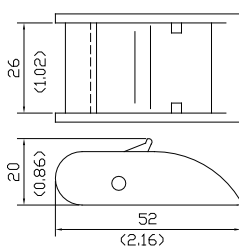
- 25mm
- B/S: 250 kgs
- Weight: 32g

A4011AA



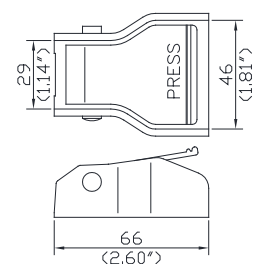
- 26mm
- B/S: 300 kgs
- Weight: 48g

A4003AD



- 26mm
- B/S: 350 kgs
- Weight: 60g

A4014AA

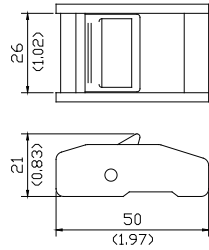


- 26mm
- B/S: 500 kgs
- Weight: 171g

## Cam Buckle

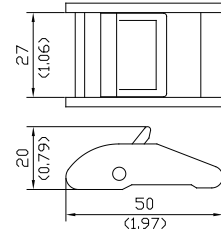
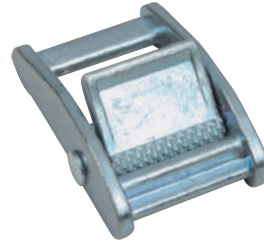
### 1" Cam Buckle

**A4016AA**



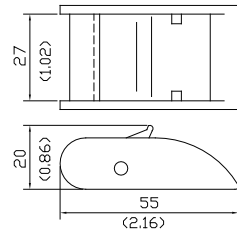
- 26mm
- B/S: 680 kgs
- Weight: 60g

**A4003AB**



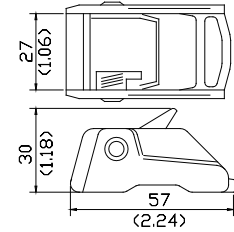
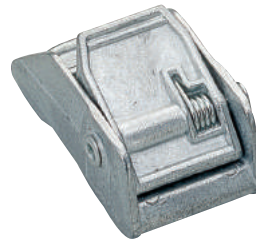
- 27mm
- B/S: 340 kgs
- Weight: 55g

**A4003AA**



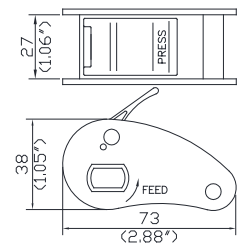
- 27mm
- B/S: 400 kgs
- Weight: 66g

**A4005AA**



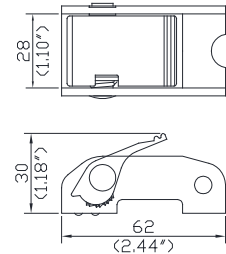
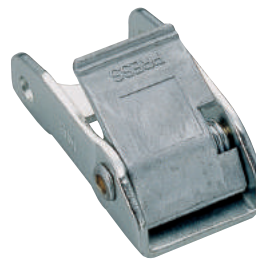
- 27mm
- B/S: 680 kgs
- Weight: 80g

**A4015AA**



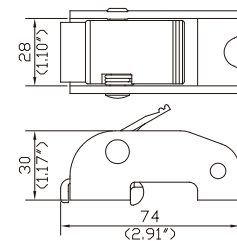
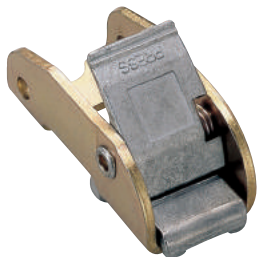
- 27mm
- B/S: 1,000 kgs
- Weight: 215g

**A4026AA**



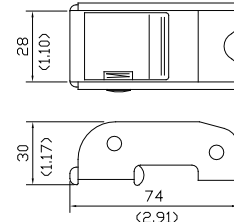
- 28mm
- B/S: 680 kgs
- Weight: 119g

**A4021AA**



- 28mm
- B/S: 800 kgs
- Weight: 181g

**A4021AC**

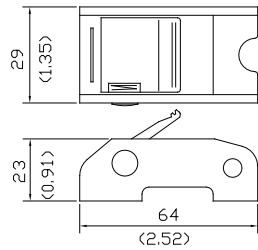


- 28mm
- B/S: 800 kgs
- Weight: 112g
- Material: Alumium

## Cam Buckle

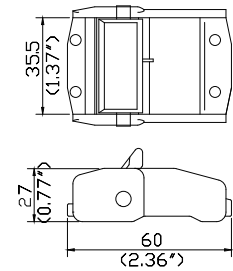
### 1" Cam Buckle

A4007AA



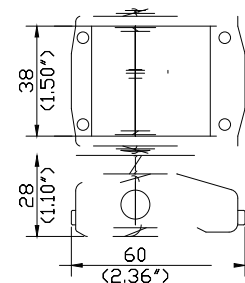
- 29mm
- B/S: 750 kgs
- Weight: 120g

A4008AA



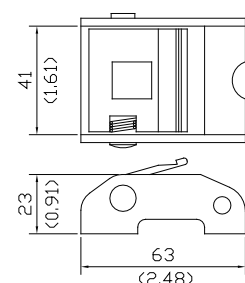
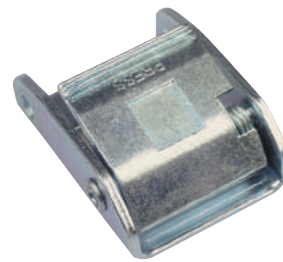
- 35mm
- B/S: 750 kgs
- Weight: 110g

A4008AB



- 38mm
- B/S: 750 kgs
- Weight: 130g

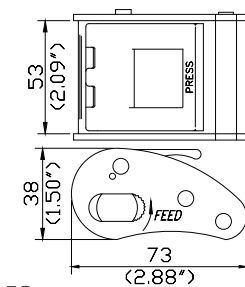
A4013AA



- 41mm
- B/S: 800 kgs
- Weight: 147g

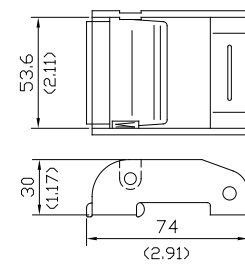
### 2" Cam Buckle

A4025AA



- 53mm
- B/S: 1,140 kgs
- Weight: 234g

A4019AA

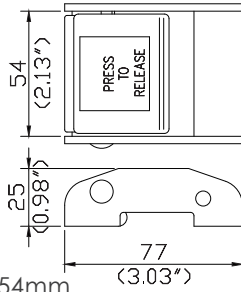
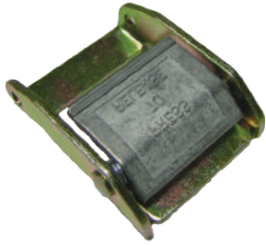


- 53mm
- B/S: 1,400 kgs
- Weight: 274g

## Cam Buckle

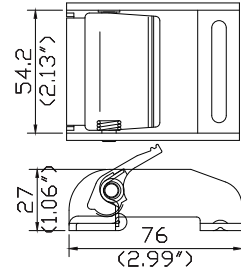
### 2" Cam Buckle

A4006AB



- 54mm
- B/S: 850 kgs
- Weight: 220g

A4006AA

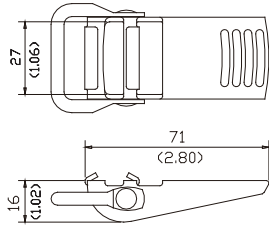


- 54mm
- B/S: 900 kgs
- Weight: 234g

## Overcenter Buckle

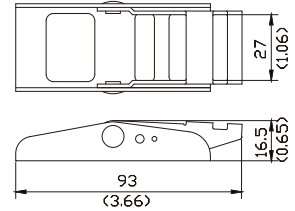
### 1" Overcenter Buckle

A5010AD



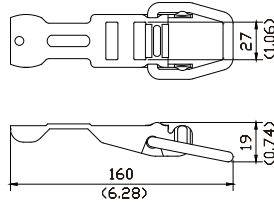
- 27mm
- B/S: 130kgs
- 51g

A5009AB



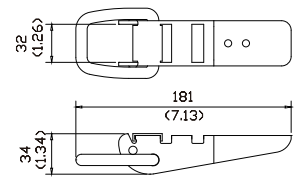
- 27mm
- B/S: 318kgs
- 70g

A5905AA



- 27mm
- B/S: 1,500kgs
- 145g

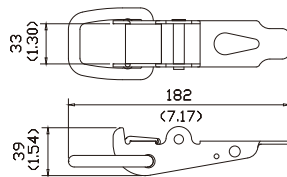
A5010AE



- 33mm
- B/S: 2,000kgs
- 293g

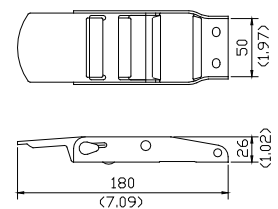
### 2" Overcenter Buckle

A5010AH



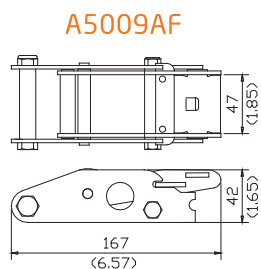
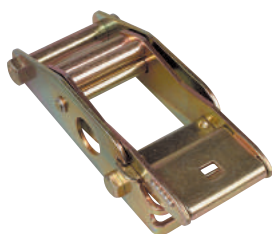
- 33mm
- B/S: 2,200kgs
- 254g

A5004AA



- 50 mm
- B/S: 600 kgs
- 272g

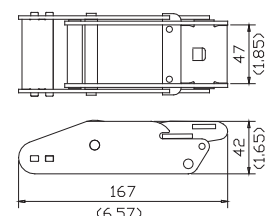
A5009AF



- 47mm
- B/S: 2,270kgs
- 735 g

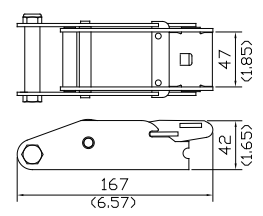
A5009AF

A5009AC



- 47mm
- B/S: 2,270kgs
- 619g

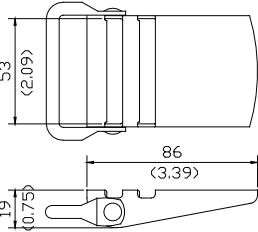
A5009AG



- 47mm
- B/S: 2,000kgs
- 554g

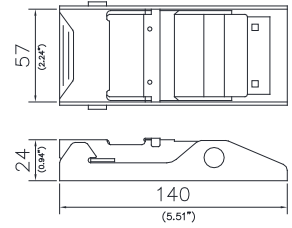
## Overcenter Buckle

A5010AC



- 53mm
- B/S: 800 kgs
- 110 g

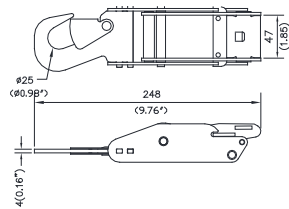
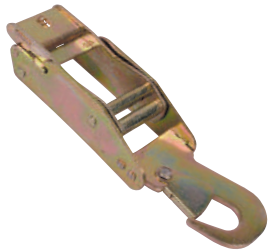
A5008AC



- 57mm
- B/S: 2,000kgs
- 390g

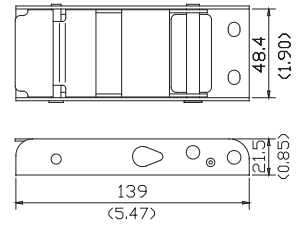
## 2" Overcenter Buckle - Stainless

A5009AD



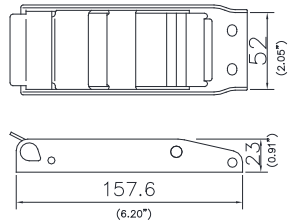
- 47mm
- B/S: 5,000kgs
- 729g

A5012AD



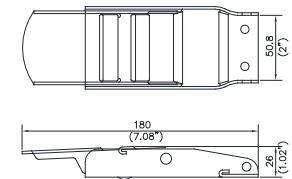
- 48.4mm
- B/S: 1,500kgs
- SUS304
- 300g

A5012AA



- 50mm
- B/S: 800kgs
- SUS304
- 619g

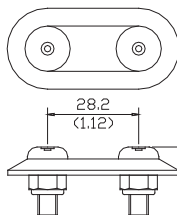
A5004AJ



- 50.8mm
- B/S: 800kgs
- SUS304
- 250g

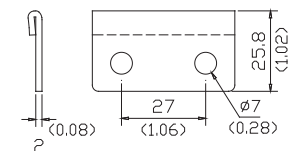
## Others

A9001AA



- 23.7g

A9001AC

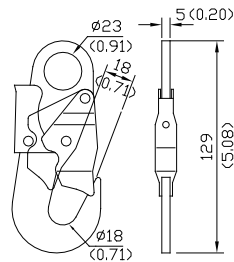


- 22g

# Snap Hook & Rebar Snap Hook

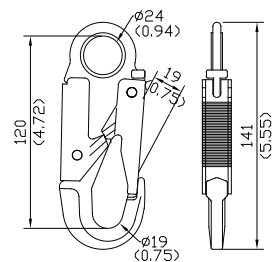
## Snap Hook

A3203AC



- 18mm
- B/S: 2,000kgs
- 194g

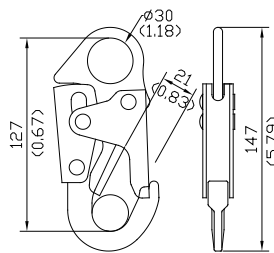
A3204AM



- ANSI Z359.1
- EN 362:2004

- 19mm
- B/S: 2,300kgs
- 298g

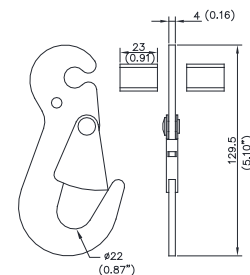
A3204AL



- EN 362:2004
- CSA Z259.12-11
- ANSI Z359.12-09

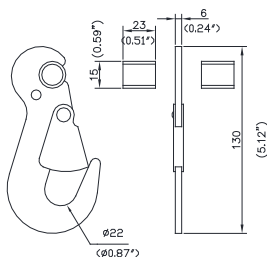
- 21mm
- B/S: 2,300kgs
- 385g

A3007AC



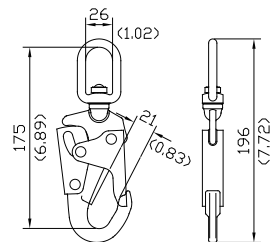
- 22mm
- B/S: 3,000kgs
- 185g

A3007AV



- 22mm
- B/S: 5,000kgs
- 220g

A3202AD

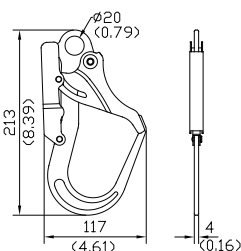


- Swivel Hook Non-indicator
- Gate 3600LBS
- ANSI Z359.12-09
- CSA Z259.12-11
- EN 362:2004

- 21mm
- B/S: 2,300kgs
- 488g

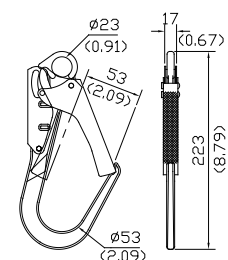
## Rebar Snap Hook

A3201BE



- 60mm
- B/S: 1,800kgs
- 340g

A3201AH



- 53mm
- B/S: 2,300kgs
- 485g

Hardware

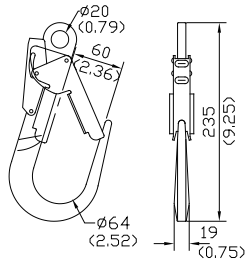
## Rebar Snap Hook & Flat Snap Hook

### Rebar Snap Hook

**A3201AY**



- EN362:2004

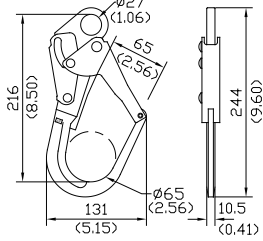


- 60mm  
- B/S: 2,300kgs  
- 460g

**A3201AT**



- EN362:2004  
- CSA Z259.12-11  
- ANSI Z359.12-09

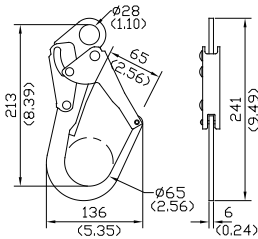


- 65mm  
- B/S: 2,300kgs  
- 788g

**A3201AU**



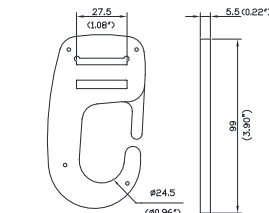
- EN362:2004  
- CSA Z259.12-11  
- ANSI Z359.12-09



- 65mm  
- B/S: 2,300kgs  
- 750g

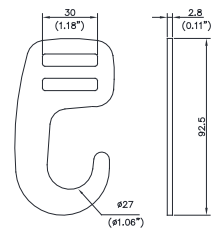
### 1" Flat Snap Hook

**A3008AA**



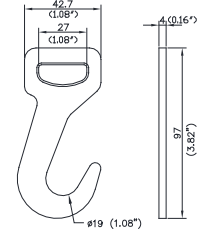
- 27.5mm  
- B/S: 450kgs  
- 44g

**A3009AA**



- 30mm  
- B/S: 900kgs  
- 50g

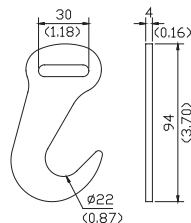
**A3009AB**



- 27mm  
- B/S: 1,500kgs  
- 72g

**A3008AA**

**A3008AF**



- 30mm  
- B/S: 2,200kgs  
- 84g



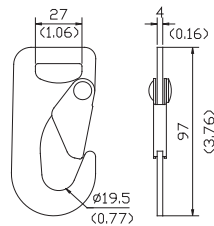
## Flat Snap Hook

### 1" Flat Snap Hook

A3008AB

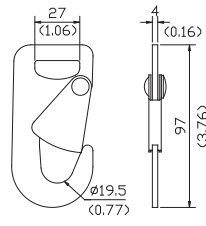


A3008AB



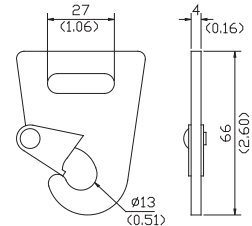
- 27mm
- B/S: 1,500kgs
- 88g

A3008AC



- 27mm
- B/S: 1,500kgs
- 88g

A3504AG

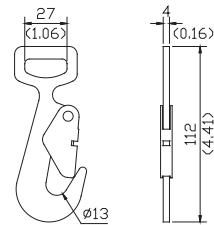


- 27mm
- B/S: 1,000kgs
- 66g

A3007AR

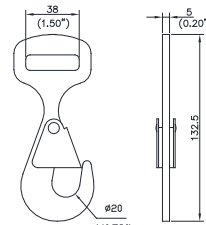


A3007AR



- 27mm
- B/S: 1,500kgs
- 98g

A3007AT



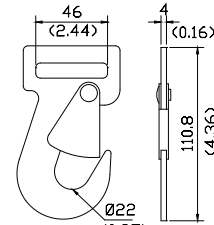
- 38mm
- B/S: 3,000kgs
- 158g

### 5.08" Flat Snap Hook

A3007AA

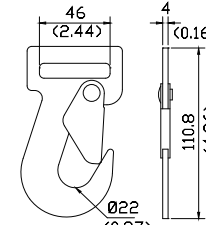


A3007AA



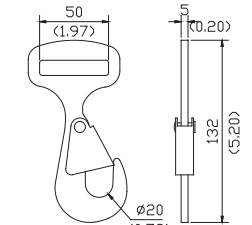
- 46mm
- B/S: 3,000kgs
- 149g

A3007AB



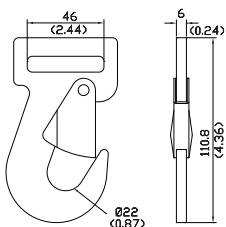
- 46mm
- B/S: 3,000kgs
- 149g

A3007AZ



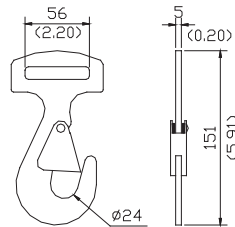
- 50mm
- B/S: 3,000kgs
- 170g

A3007AG



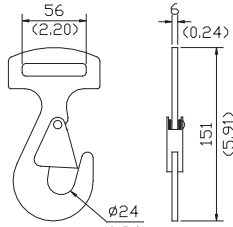
- 46mm
- B/S: 5,000kgs
- 215g

A3007AH



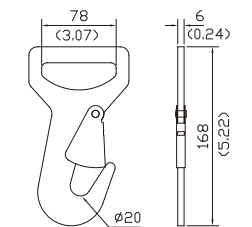
- 56mm
- B/S: 5,000kgs
- 260g

A3027AB



- 56mm
- B/S: 5,000kgs
- 306g

A3007AU



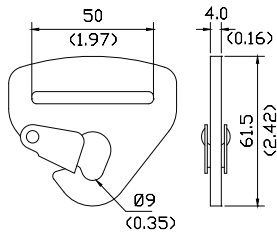
- 78mm
- B/S: 7,000kgs
- 408g

Hardware

## Snap Hook

### 2" Flat Snap Hook

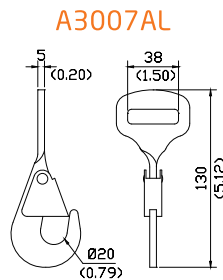
A3504AE



- 50mm
- B/S: 1,000kgs
- 85g

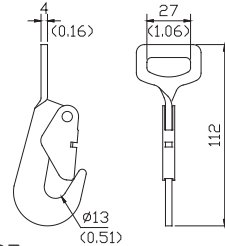
### Twisted Snap Hook

A3007AL



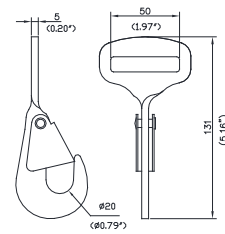
- 38mm
- B/S: 3,000kgs
- 158g

A3007AQ



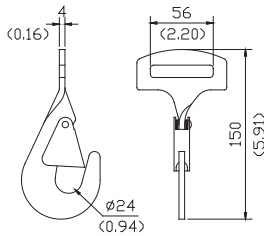
- 27mm
- B/S: 1,500kgs
- 98g

A3007AW



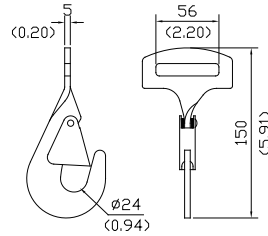
- 50mm
- B/S: 3,000kgs
- 170g

A3007AK



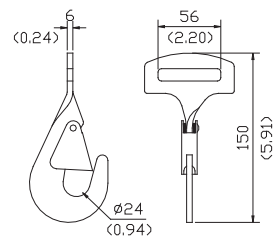
- 56mm
- B/S: 2,270 kgs
- 259g

A3007AF



- 56mm
- B/S: 5,000kgs
- 259g

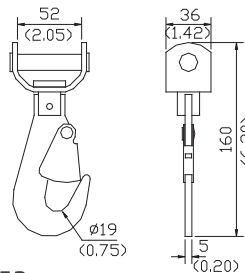
A3027AA



- 56mm
- B/S: 5,000kgs
- 306g

### Twisted Snap Hook

A3007AM



- 52mm
- B/S: 4,545kgs
- 393g

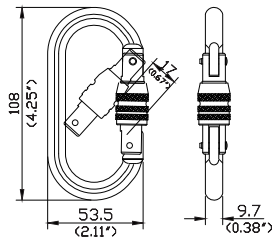
Carabiner

Carabiner & Forged Hook

A3403EF



- Screw gate
- CE0082; EN362:2004
- Alloy Steel, Heat treated

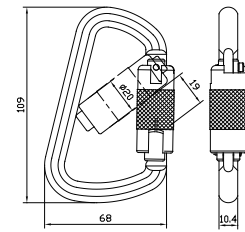


- B/S: 2,500kgs
- 178g

A3409AA



- Screw gate;
- Twisted locking;
- Captive pin
- CE0082; EN362:2004
- Alloy Steel, Heat treated

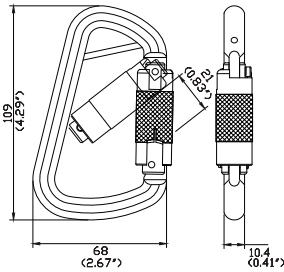


- B/S: 2,500kgs
- 252g

A3409AK



- Screw gate;
- Twisted locking;
- Captive pin
- CE0082; EN362:2004
- Alloy Steel, Heat treated

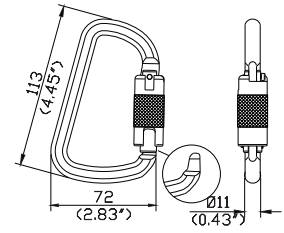


- B/S: 2,500kgs
- 236g

A3409DA



- Screw gate;
- Twisted locking;
- ANSI Z359.12(09)
- Alloy Steel, Heat treated

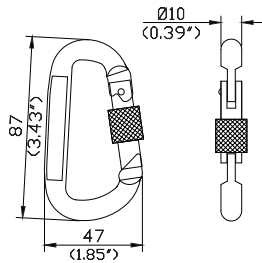


- B/S: 2,500kgs
- 252g
- Gate 3,600LBS

A3418AA



- Iron, painted & heat treated
- Screw gate

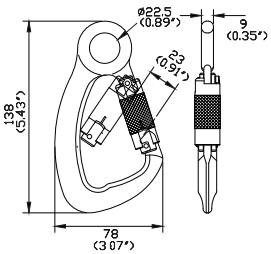


- B/S: 1,636kgs
- 112g

A3416AC

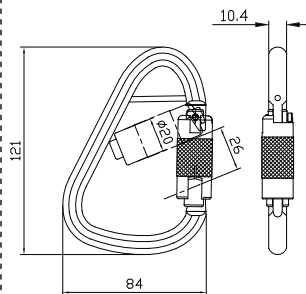


- Screw gate;
- Twisted locking
- CE0082; EN362:2004

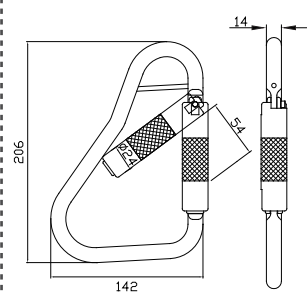


- B/S: 2,300kgs
- Aluminum alloy
- 120g

A3413



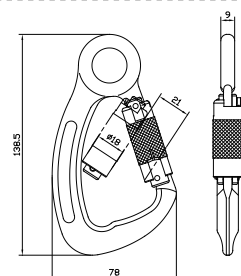
A3419



A3417AC



- Screw gate;
- Twisted locking
- CE0082; EN362:2004

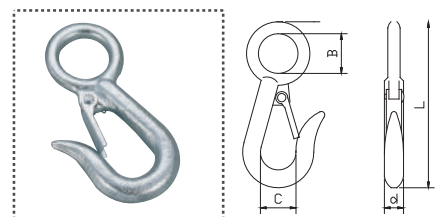


- B/S: 2,500kgs
- Aluminum alloy
- 252g

Forged Hook

A3104AA

- 19mm
- B/S: 1,363kgs
- 109g

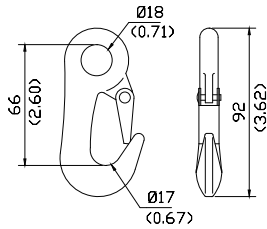


Model No.	Hook Size	Weight	B	C	L	B/S(kgs)
3104AA	7/16"	109g	3/4"	3/4"	4"	1,363
3104AB	9/16"	227g	1 1/8"	13/16"	4 3/4"	1,816

## Forged Hook

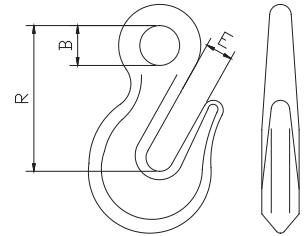
### Forged Hook

**A3110AA**



- 17mm
- B/S: 2,500kgs
- 165g

**A3802AA**

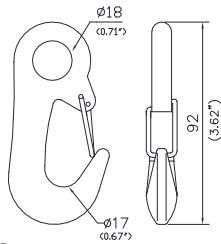


- |                  |                  |
|------------------|------------------|
| 5/16" :          | 3/8" :           |
| - 14.4mm         | - 16.7mm         |
| - B/S: 18,410kgs | - B/S: 32,000kgs |
| - 392g           | - 252g           |

**A3109AA**

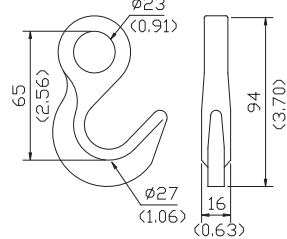


**A3109AA**



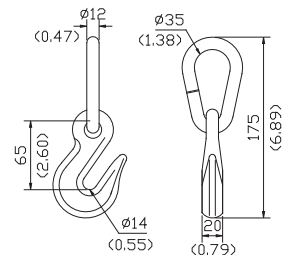
- 18mm
- B/S: 2,500kgs
- 154g

**A3802AE**



- 23mm
- B/S: 5,454kgs
- 216g

**A3802AC**

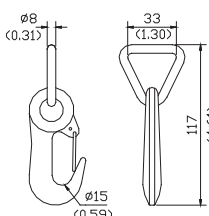


- 35mm
- B/S: 7,350kgs
- 584g

**A3113AA**

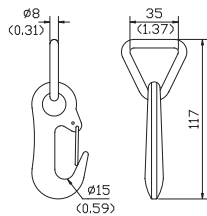


**A3113AA**



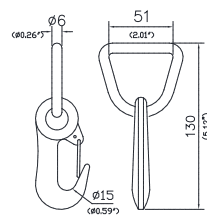
- 33mm
- B/S: 2,500kgs
- 200g

**A3113AD**



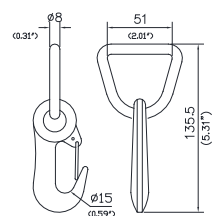
- 35mm
- B/S: 3,000kgs
- 200g

**A3113AB**



- 51mm
- B/S: 2,500kgs
- 230g

**A3113AC**

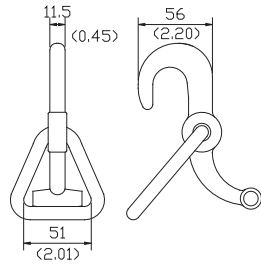


- 51mm
- B/S: 3,000kgs
- 226g

## Forged Hook

### Forged Hook

A3114AA

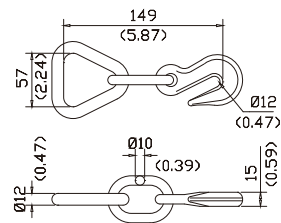


- 51mm
- B/S: 2,000kgs
- 425g

A3802AH

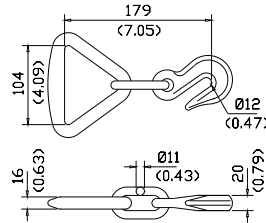


A3802AH



- 57mm
- B/S: 4,545kgs
- 525g

A3802AI

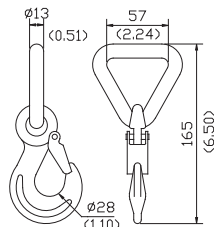


- 104mm
- B/S: 7,350kgs
- 1,039g

A3112AA

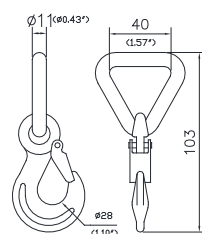


A3112AA



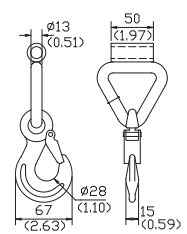
- 57mm
- B/S: 5,000kgs
- 482g

A3112AF



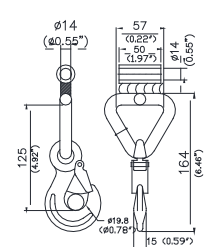
- 40mm
- B/S: 3,000kgs
- 418g

A3112AC



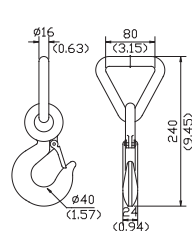
- 50mm
- B/S: 5,000kgs
- 650g

A3112AE



- 50mm
- B/S: 5,000kgs
- 670g

A3112AB

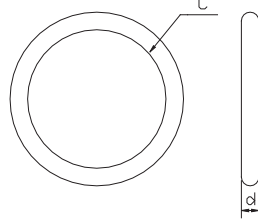


- 80mm
- B/S: 10,000kgs
- 1,509g

## O Ring & Forged O Ring & D Ring

### O Ring

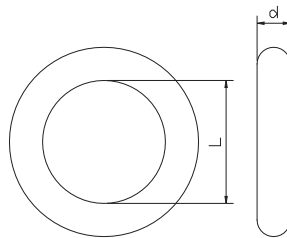
A3306AA - A3317AB



P/N	d (mm)	c (mm)	B/S (kgs)	Weight (g)
A3306AA	10	50	2,500	116
A3306AB	9	50	1,500	115
A3306AC	4	32	X	21
A3306AD	7	50	1,800	54
A3306AE	6	50	1,000	39
A3306AF	10	57	4,545	131
A3306AG	4	50	X	17
A3314AA	11.8	75	2,272	242
A3314AC	12.7	75	5,000	276
A3315AA	10	45	1,800	103
A3315AB	8	45	1,800	67
A3315AC	6	36	2,270	29
A3315AD	8	38	2,272	60
A3317AA	4	20	X	7
A3317AB	4	25	X	9

### Forged O Ring

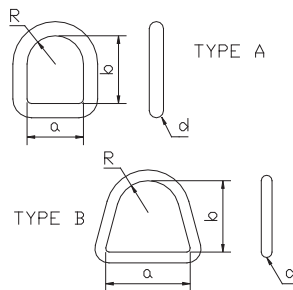
A3508AA - A3308AC



P/N	d (mm)	c (mm)	B/S (kgs)	Weight (g)
A3508AA	9.5	50	5,000	105
A3508AB	10	57	5,000	125
A3508AC	12.7	57	5,000	276

### D Ring

A3302AA~A3311AA



P/N	a (mm)	b (mm)	R (mm)	d (mm)	B/S (kgs)	Type	Weight (g)
A3302AA	28	20	14	5	800	A	111
A3302AB	52	40	26	10	4,540	A	114
A3302AC	52	44	26	6.5	2,300	A	49
A3302AD	58	39	29	3	x	A	9
A3302AE	50	33	25	6	x	A	6
A3303AA	51	43	19	6.5	2,300	B	56.5
A3304AA	25	30	12.5	6.3	2,300	A	35
A3304AB	17	16	7.5	3	x	B	4
A3304AC	23	17	10.5	3	x	B	4
A3304AD	24	22	11	4	x	B	9
A3304AE	25	32	10	6.2	2,000	B	28
A3305AA	52	66	14	8	2,300	B	84
A3307AA	44	33	22	5	800	A	53
A3307AB	47	41	23.5	7	2,500	A	53
A3307AD	47	41	23.5	6	1,820	A	38
A3307AE	42	42	21	10	3,000	A	111
A3308AA	46	38	22	6.8	1,750	B	48
A3309AA	52	46	20	6.5	2,300	B	48
A3310AA	44	70	11	7	2,500	B	48
A3311AA	56	48	9	11	5,000	B	157

A3316AA

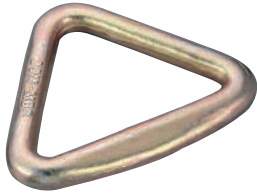
P/N	a (mm)	b (mm)	R (mm)	d (mm)	B/S	Type	Weight (g)
A3316AA	28.5	50	10	6.5	x	B	35

- Stainless

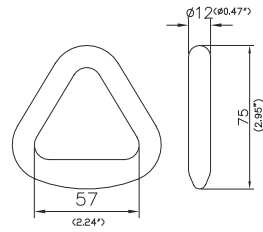
## Forged Delta Ring & Chain and Hook

### Forged Delta Ring

A3509AA

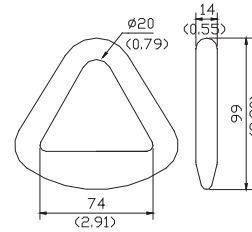


A3509AA



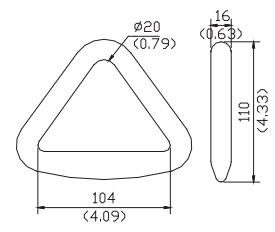
- 57mm
- B/S: 5,000kgs
- 199g

A3506AA



- 74mm
- B/S: 8,200kgs
- 385g

A3505AA



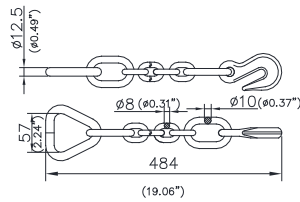
- 104mm
- B/S: 9,090kgs
- 542g

### Chain and Hook

A3802AB

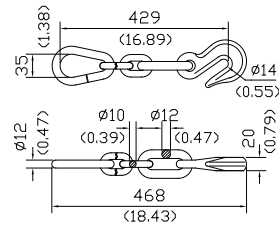


A3802AB



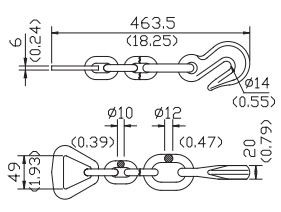
- 57mm
- B/S: 4,545kgs
- 1,029g

A3802AD



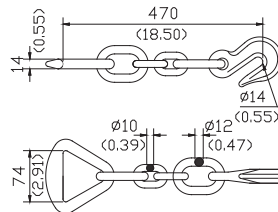
- 35mm
- B/S: 7,350kgs
- 1,276g

A3802AP



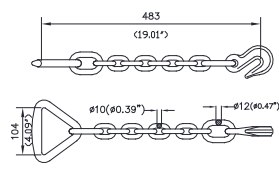
- 49mm
- B/S: 5,000kgs
- 1,619g

A3802AK



- 74mm
- B/S: 7,364kgs
- 1,720g

A3802AG



- 104mm
- B/S: 7,364kgs
- 1,808g

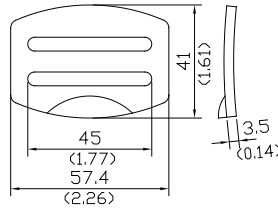
## Mating Buckle

### Stamping Male Buckle

A6010AE



A6010AE



- B/S: 1,818 kgs  
- Weight: 45g

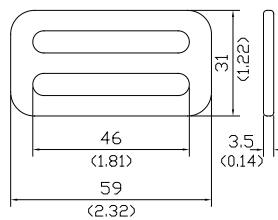
A6010AB



A6010BP

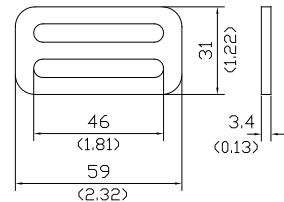


A6010BP



- B/S: 1,818 kgs  
- Weight: 32g

A6010AB



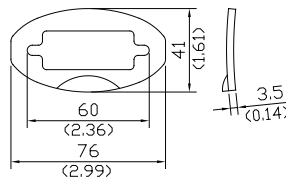
- Material: Stainless  
- B/S: 1,500 kgs  
- Weight: 31g

### Stamping Female Buckle

A6012AE



A6012AE



- Material: Stainless  
- B/S: 1,818 kgs  
- Weight: 42.5g

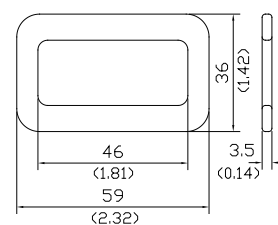
A6012AA



A6012BP

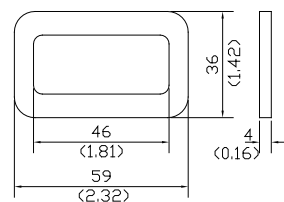


A6012BP



- B/S: 1,818 kgs  
- Weight: 30g

A6012AA



- Material: Stainless  
- B/S: 1,500 kgs  
- Weight: 35.5g

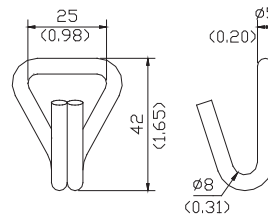


# Double J Hook

## 1" Double J Hook

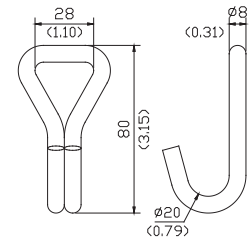


A3010AJ



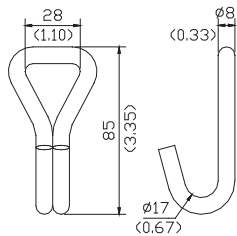
- 25mm
- B/S: 700kgs
- 30g

A3010FJ



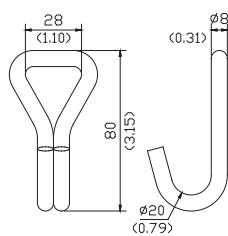
- 28mm
- B/S: 800kgs
- 115g

A3010AH



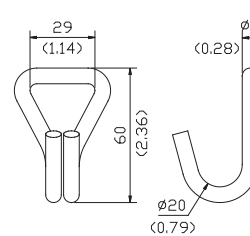
- 28mm
- B/S: 1,500kgs
- 120g

A3010AF



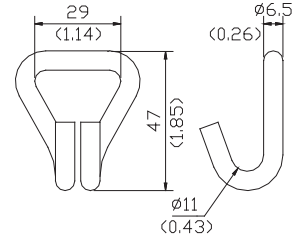
- 28mm
- B/S: 1,800kgs
- 114g

A3001AC



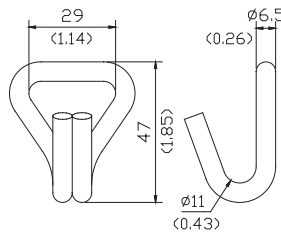
- 29mm
- B/S: 1,200kgs
- 66g

A3001AN



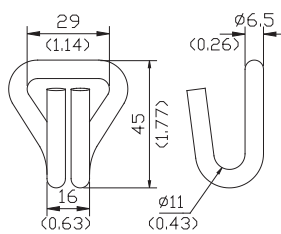
- 29mm
- B/S: 1,350kgs
- 45g

A3016AA



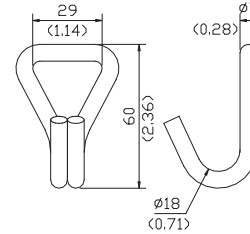
- 29mm
- B/S: 1,363kgs
- 46g

A3016AE



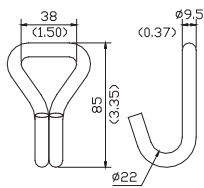
- 29mm
- B/S: 1,363kgs
- 52g

A3016AK



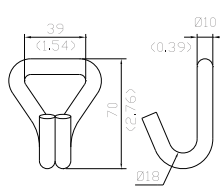
- 29mm
- B/S: 1,600kgs
- 69g

A3001AB



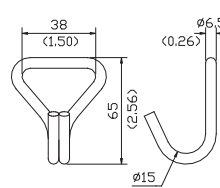
- 38mm
- B/S: 2,500kgs
- 173g

A3018AB



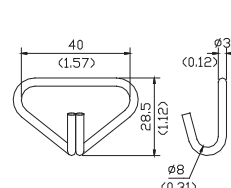
- 39mm
- B/S: 3,000kgs
- 167g

A3018AC



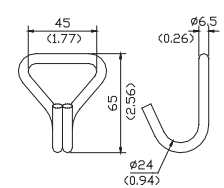
- 38mm
- B/S: 1,200kgs
- 64g

A3010AX



- 40mm
- B/S: 150kgs
- 87g

A3010AY



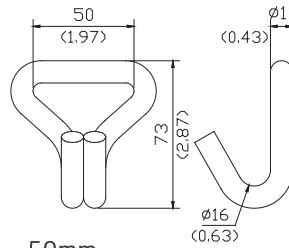
- 45mm
- B/S: 680kgs
- 71g

## Double J Hook

### 2" Double J Hook

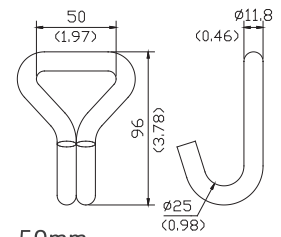


**A3017AE**



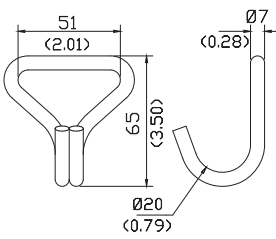
- 50mm
- B/S: 5,000kgs
- 218g

**A3017AD**



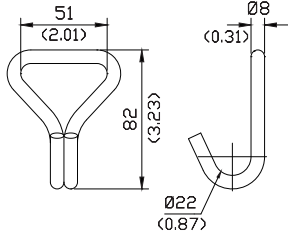
- 50mm
- B/S: 5,000kgs
- 298g

**A3001AV**



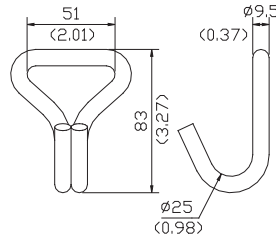
- 51mm
- B/S: 1,200kgs
- 83g

**A3001BK**



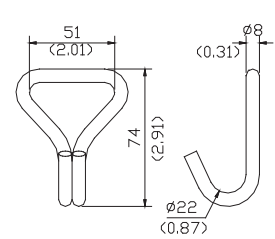
- 51mm
- B/S: 2,000kgs
- 122g

**A3001AF**



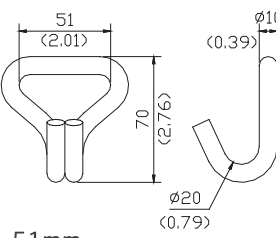
- 51mm
- B/S: 2,500kgs
- 160g

**A3001AJ**



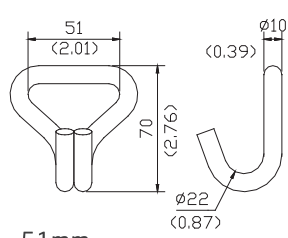
- 51mm
- B/S: 2,500kgs
- 116g

**A3001AE**



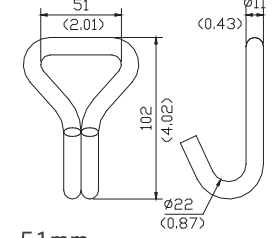
- 51mm
- B/S: 3,000kgs
- 175g

**A3001AL**



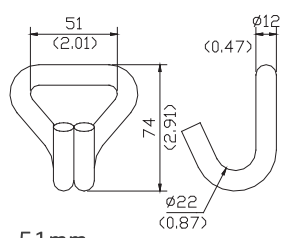
- 51mm
- B/S: 3,000kgs
- 127g

**A3001AM**



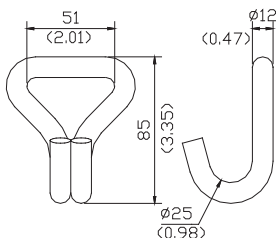
- 51mm
- B/S: 4,500kgs
- 263g

**A3001AD**



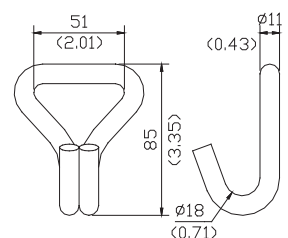
- 51mm
- B/S: 5,000kgs
- 279g

**A3001AG**



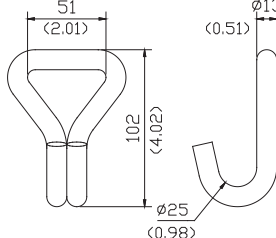
- 51mm
- B/S: 5,000kgs
- 274g

**A3010AL**



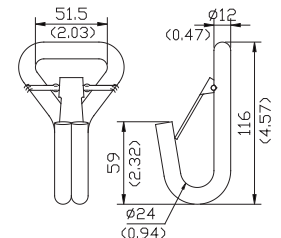
- 51mm
- B/S: 5,000kgs
- 224g

**A3017AA**



- 51mm
- B/S: 6,800kgs
- 373g

**A3017AK**



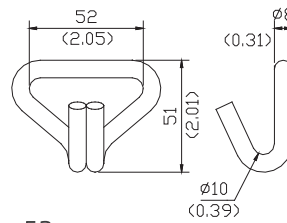
- 51.5mm
- B/S: 5,000kgs
- 406g

## Double J Hook

### 2" Double J Hook

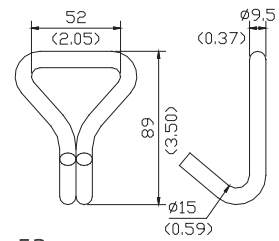


A3001AH



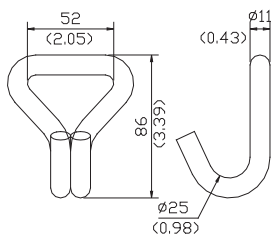
- 52mm
- B/S: 2,500kgs
- 87g

A3001AQ



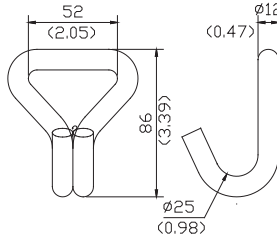
- 52mm
- B/S: 3,000kgs
- 180g

A3017AH



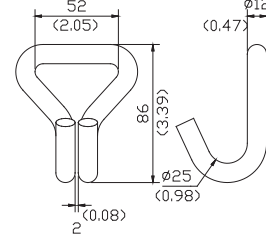
- 52mm
- B/S: 4,500kgs
- 223g

A3001AA



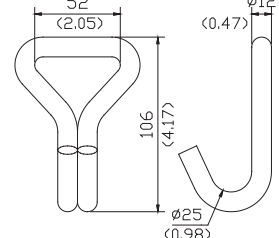
- 52mm
- B/S: 5,000kgs
- 282g

A3010AM



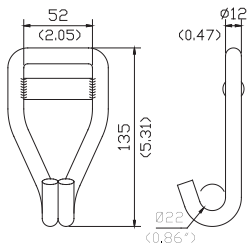
- 52mm
- B/S: 5,000kgs
- 415g

A3017AC



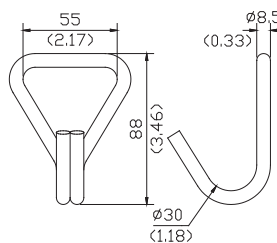
- 52mm
- B/S: 5,000kgs
- 307g

A3017AF



- 52mm
- B/S: 6,000kgs
- 450g

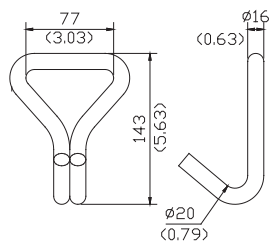
A3001AP



- 55mm
- B/S: 1,500kgs
- 144g

### 3" Double J Hook

A3001AR



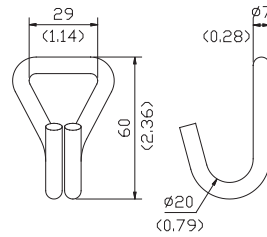
- 77mm
- B/S: 10,000kgs
- 715g

## Double J Hook & Open Hook

### Stainless Double J Hook

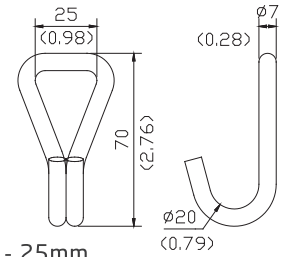


**A3010AC**



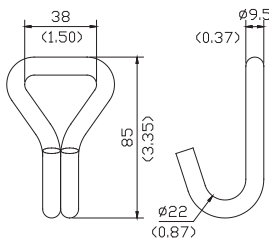
- 29mm
- B/S: 400kgs
- SUS304
- 70g

**A3010AD**



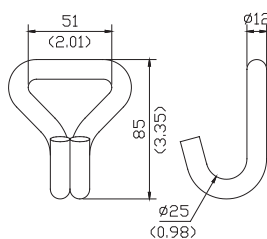
- 25mm
- B/S: 450kgs
- SUS304
- 65g

**A3010AB**



- 38mm
- B/S: 1,000kgs
- SUS304
- 170g

**A3010AA**

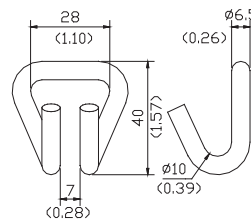


- 51mm
- B/S: 2,500kgs
- SUS304
- 310g

### Open Hook

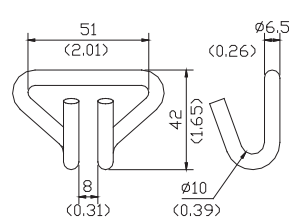


**A3010AK**



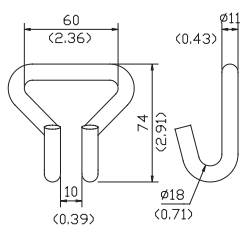
- 28mm
- B/S: 1,000kgs
- 41g

**A3001AO**



- 51mm
- B/S: 1,200kgs
- 46g

**A3017AG**

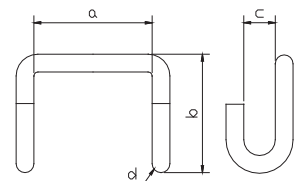


- 60mm
- B/S: 5,000kgs
- 224g

**A3002AA - A3002AD**



P/N	a (mm)	b (mm)	R (mm)	d (mm)	B/S (kgs)	Weight (g)
A3002AA	60	60	16	9	3,000	126
A3002AB	54	60	16	12	5,000	201
A3002AC	54	55	20	12	5,000	210
A3002AD	78	102	20	16	10,000	580



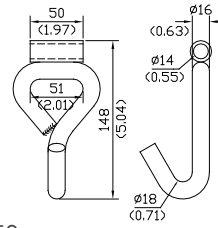
# Single J Hook & Swivel J Hook

## Single J Hook



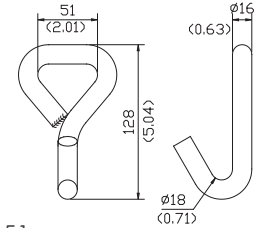
## 2" Single J Hook

A3001AW



- 50mm
- B/S: 3,000kgs
- 229g

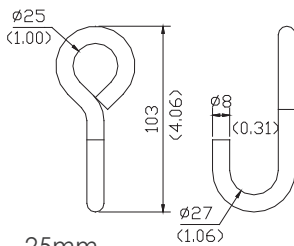
A3001AZ



- 51mm
- B/S: 5,000kgs
- 485g

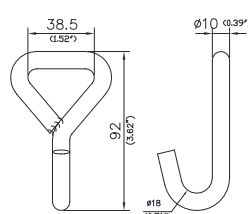
## 1" Single J Hook

A3004AF



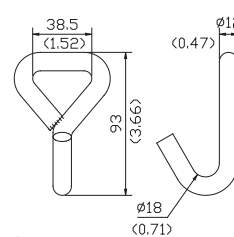
- 25mm
- B/S: 400kgs
- 123g

A3021AD



- 38mm
- B/S: 2,000kgs
- 139g

A3001AS



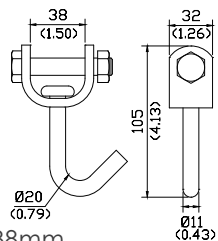
- 38.5mm
- B/S: 3,000kgs
- 202g

## Swivel J Hook



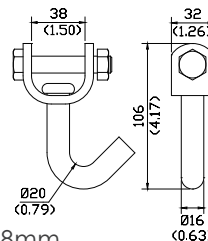
## 1" Swivel J Hook

A3021AB



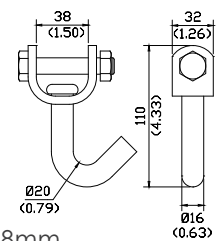
- 38mm
- B/S: 2,272kgs
- 365g

A3001AX



- 38mm
- B/S: 5,000kgs
- 393g

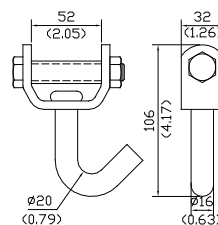
A3021AA



- 38mm
- B/S: 5,000kgs
- 406g

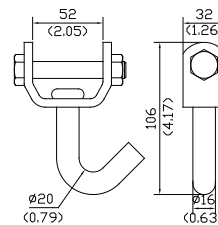
## 2" Swivel J Hook

A3001AY



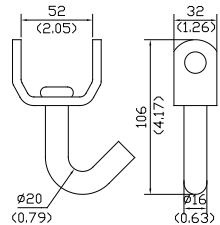
- 52mm
- B/S: 5,000kgs
- 439g

A3001BY



- 52mm
- B/S: 5,000kgs
- 439g

A3001CY



- 52mm
- B/S: 5,000kgs
- 439g

## J Hook w/Tube

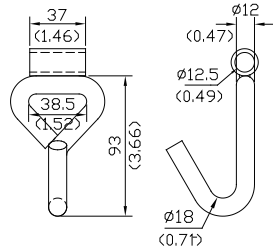
### J Hook w/Tube

A3001AT



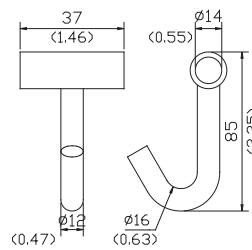
#### 1" J Hook w/ Tube

A3001AT



- 37mm
- B/S: 3,000kgs
- 252g

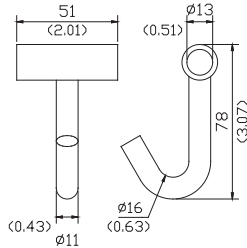
A3011AD



- 37mm
- B/S: 3,000kgs
- 128 g

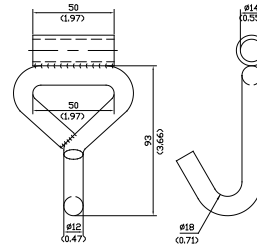
#### 2" J Hook w/ Tube

A3011AA



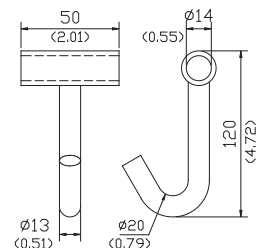
- 51mm
- B/S: 2,270kgs
- 485g

A3010AW



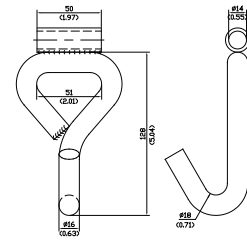
- 50mm
- B/S: 3,000kgs
- 300g

A3011AE



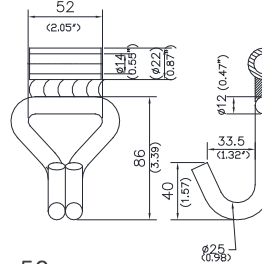
- 50mm
- B/S: 3,000kgs
- 180g

A3010AU



- 51mm
- B/S: 5,000kgs
- 539g

A3001BA



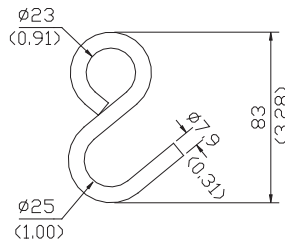
- 50mm
- B/S: 5,000kgs
- 539g

# S Hook

## S Hook

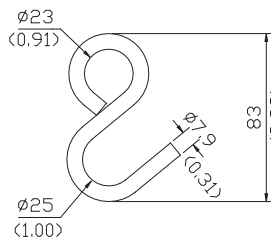


**A3004PJ**



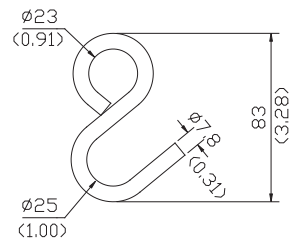
- 23mm
- B/S: 250kgs
- 79g

**A3004AW**



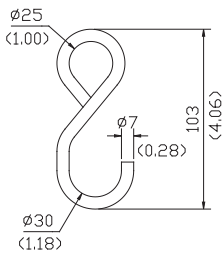
- 23mm
- B/S: 400kgs
- 79g

**A3004AP**



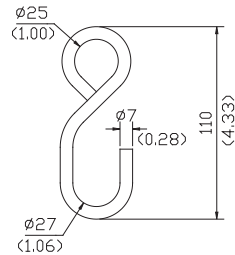
- 23mm
- B/S: 680kgs
- 79g

**A3004AG**



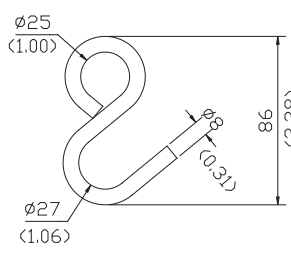
- 25mm
- B/S: 600kgs
- 67g

**A3004AB**



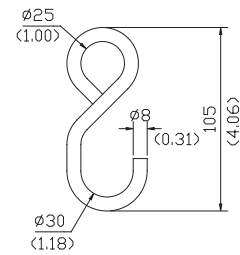
- 25mm
- B/S: 600kgs
- 83g

**A3004AE**



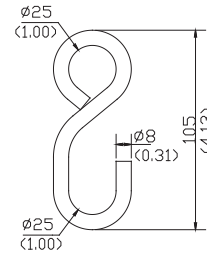
- 25mm
- B/S: 680kgs
- 78g

**A3004AL**



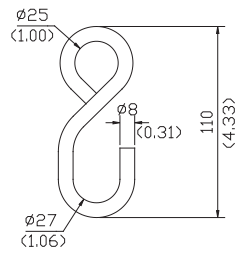
- 25mm
- B/S: 900kgs
- 88g

**A3004AU**



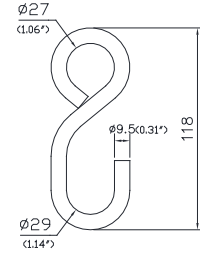
- 25mm
- B/S: 900kgs
- 90g

**A3004AA**



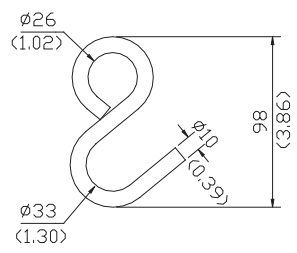
- 25mm
- B/S: 900kgs
- 96g

**A3004AD**



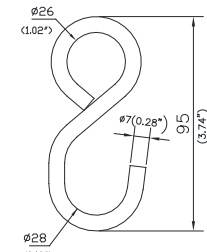
- 25mm
- B/S: 1,100kgs
- 142g

**A3014AA**



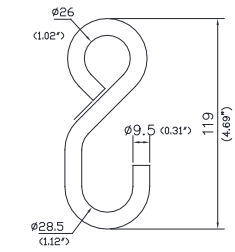
- 26mm
- B/S: 400kgs
- 132g

**A3004AK**



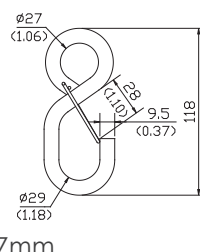
- 26mm
- B/S: 500kgs
- 65g

**A3004AV**



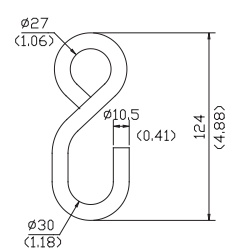
- 26mm
- B/S: 700kgs
- 164g

**A3004AZ**



- 27mm
- B/S: 1,100kgs
- w/ leaf spring
- 148g

**A3004AI**



- 27mm
- B/S: 1,500kgs
- 180g

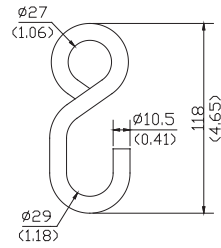
Hardware

## Hook & Hook w/Keeper

### S Hook



A3004AY



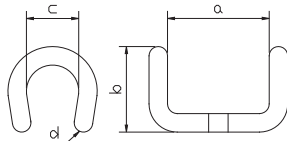
- 27mm
- B/S: 1,500kgs
- 170g

### Rave Hook

A3028AA



A3028AA- A3028AG

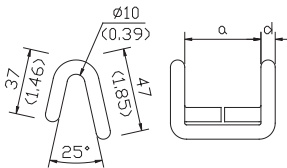


P/N	a (mm)	b (mm)	C (mm)	d (mm)	B/S (kgs)	Weight (g)
A3028AA	52	42	27	9	1,750	149
A3028AB	55	36	16	9.5	2,000	180
A3028AC	55	51	35	9.5	2,000	180
A3028AD	51.4	41	24	9.5	2,000	148
A3028AE	52	36	10	9.5	2,000	130
A3028AG	59	45	26	9.5	1,500	157

A3701AA



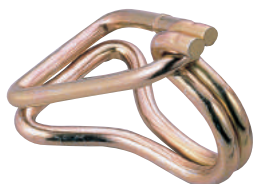
A3701AA- A3701AC



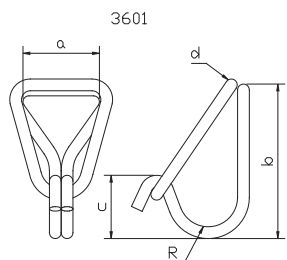
P/N	a (mm)	d (mm)	B/S (kgs)	Weight (g)
A3701AA	51	8	1,200	100
A3701AB	54	10	1,500	153
A3701AC	53	9.5	1,500	140

### Hook w/Keeper

A3601AA



A3601AA- A3601AH



P/N	a (mm)	b (mm)	C (mm)	d (mm)	R (mm)	B/S (kgs)	Weight (g)
A3601AA	51	92	48	8.5	12	5,000	247
A3601AB	55	95	58	8	18	3,000	285
A3601AC	52	100	36	8	20	4,000	250
A3601AD	52	105	42	8.5	20	5,000	287
A3601AE	40	90	48	8	20	2,000	245
A3601AF	27	70	35	6.5	13	1,000	210
A3601AG	75	88	56	9.5	15	10,000	522
A3601AH	51	95	32	9	18	5,000	316



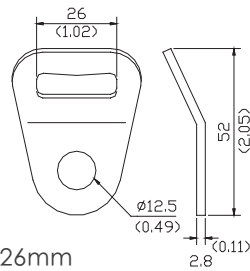
## Flat Hook

### Flat Hook 1"

A3504AA

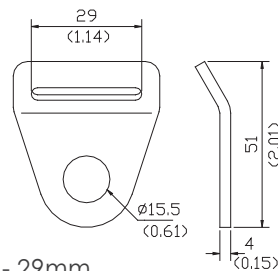


A3504AA



- 26mm
- B/S: 1,000kgs
- 32g

A3504AQ

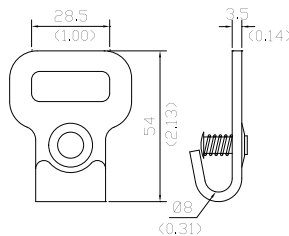


- 29mm
- B/S: 1,000kgs
- 47g

A3055AA

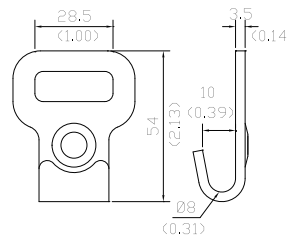


A3055AA



- 28.5mm
- B/S: 1,500kgs
- 57g

A3055AB



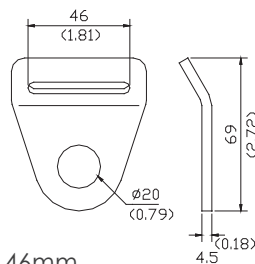
- 28.5mm
- B/S: 1,500kgs
- 57g

### Flat Hook 1 3/4"

A3504AD

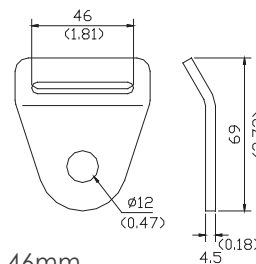


A3504AD



- 46mm
- B/S: 2,270kgs
- 98g

A3504AF

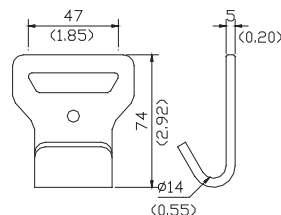


- 46mm
- B/S: 2,270kgs
- 104g

A3025AB



A3025AB



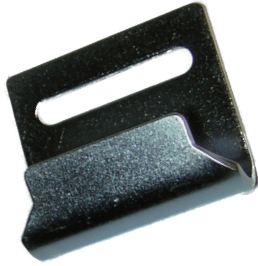
- 47mm
- B/S: 3,000kgs
- 167g

Hardware

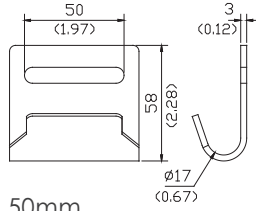
## Flat Hook

### Flat Hook 2"

A3005AK

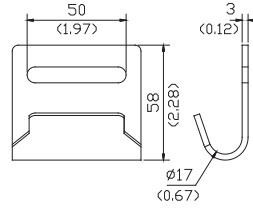


A3005AJ



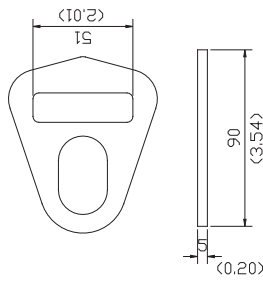
- 50mm
- B/S: 780kgs
- SUS304
- 120g

A3005AK



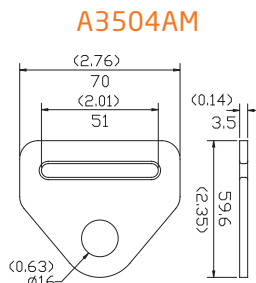
- 50mm
- B/S: 1,500kgs
- 120g

A3504AH



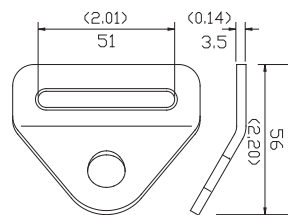
- 51mm
- B/S: 7,363kgs
- 123g

A3504AM



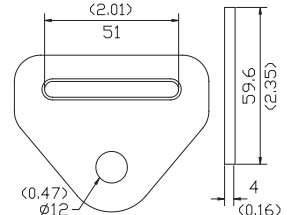
- 51mm
- B/S: 3,000kgs
- 72g

A3504AK



- 51mm
- B/S: 3,000kgs
- 78g

A3504AI

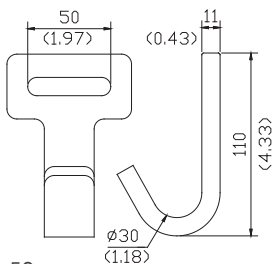


- 51mm
- B/S: 3,300kgs
- 84g

A3510AA

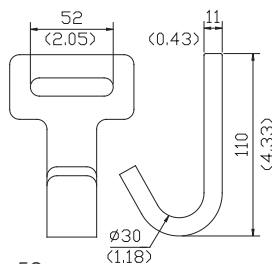


A3510AA



- 50mm
- B/S: 5,000kgs
- 519g

A3510AB



- 52mm
- B/S: 5,000kgs
- 500g

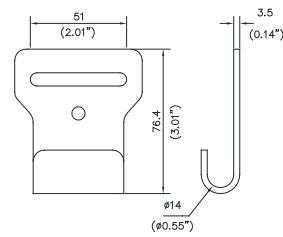
# Flat Hook

## Flat Hook 2"

A3045AA

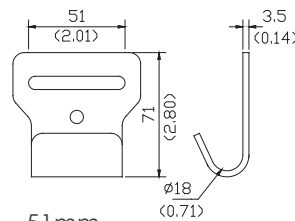


A3045AA



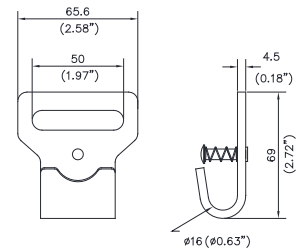
- 51mm
- B/S: 2,500kgs
- 150g

A3045AE



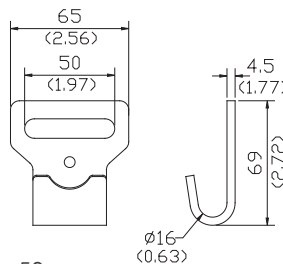
- 51mm
- B/S: 2,500kgs
- 150g

A3025AK



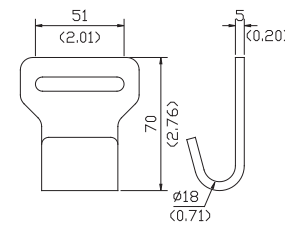
- 50mm
- B/S: 3,000kgs
- 157.3g

A3025AL



- 50mm
- B/S: 3,000kgs
- 151g

A3057AA

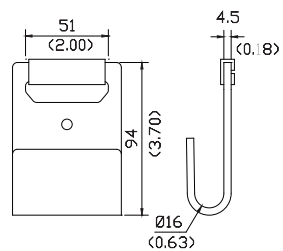


- 50mm
- B/S: 4,000kgs
- 203g

A3005AA

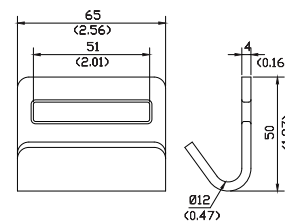


A3005AA



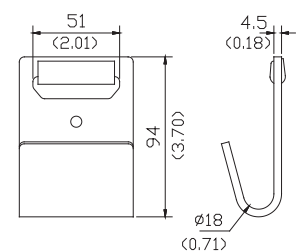
- 51mm
- B/S: 4,500kgs
- 331g

A3005AD



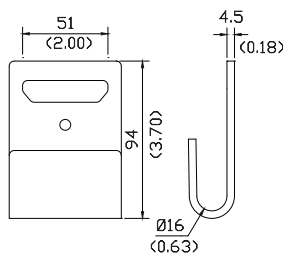
- 51mm
- B/S: 2,500kgs
- 329g

A3005AC



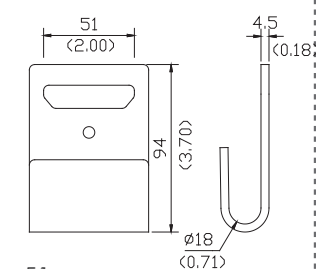
- 50mm
- B/S: 4,500kgs
- 312g

A3005AB



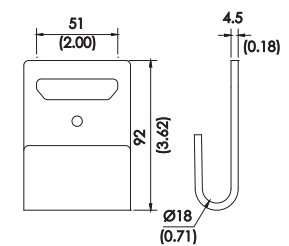
- 51mm
- B/S: 4,500kgs
- 305g

A3005AG



- 51mm
- B/S: 4,500kgs
- 305g

A3005AN



- 51mm
- B/S: 4,500kgs
- 325g

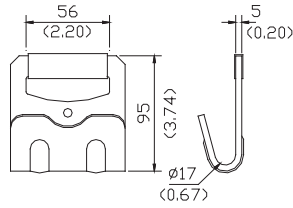
## Flat Hook

### Flat Hook 2"

A3035AA

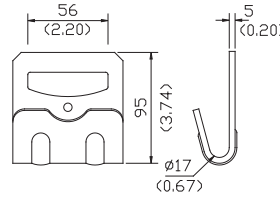


A3035AA



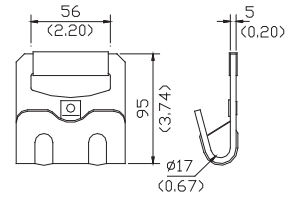
- 56mm
- B/S: 6,000kgs
- 436g

A3034AB



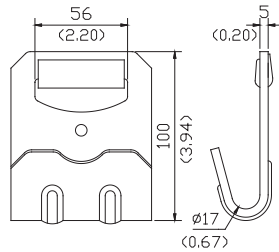
- 56mm
- B/S: 6,000kgs
- 427g

A3035AC



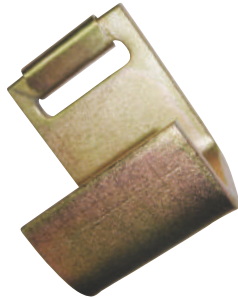
- 56mm
- B/S: 6,000kgs
- 436g

A3035AD

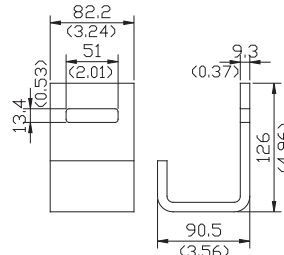


- 55mm
- B/S: 7,363kgs
- 436g

A3005AF

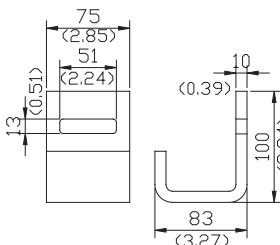


A3005AF



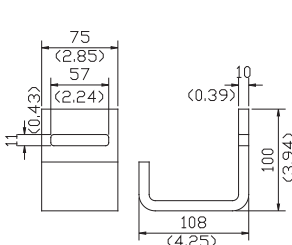
- 51mm
- B/S: 7,363kgs
- 1,357g

A3005AM



- 51mm
- B/S: 7,363kgs
- 1,500g

A3005AL

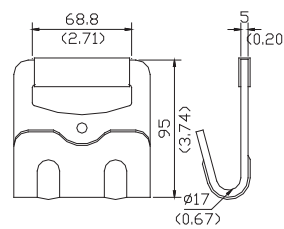


- 57mm
- B/S: 7,363kgs
- 1,500g

A3015AA

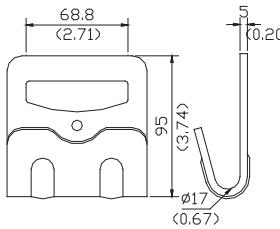


A3015AA



- 68.8mm
- B/S: 6,800kgs
- 535g

A3015AB

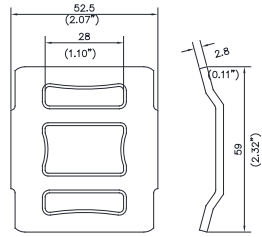
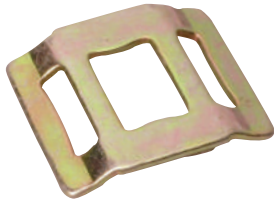


- 68.8mm
- B/S: 6,800kgs
- 473g

# One Way Buckle

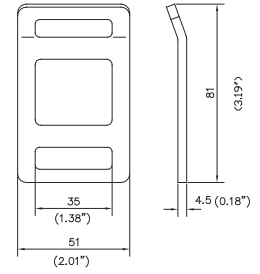
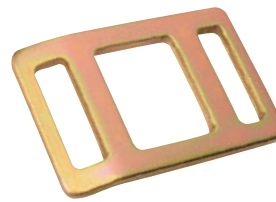
## 1" One Way Buckle

A6009AH



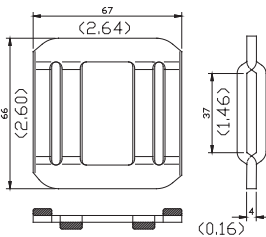
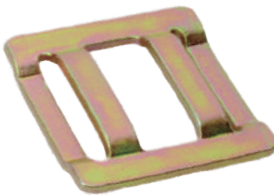
- 28mm
- B/S: 1,100kgs
- 45g

A6009AL



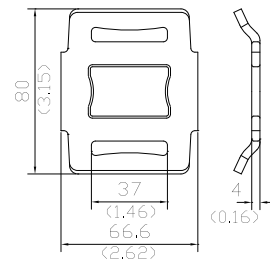
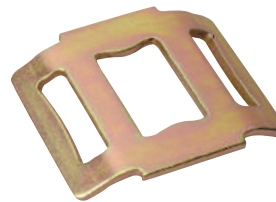
- 35mm
- B/S: 1,600kgs
- 81g

A6009AD



- 37mm
- B/S: 1,250kgs
- 93g

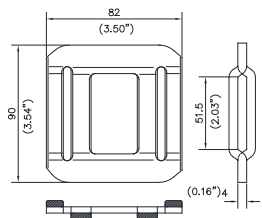
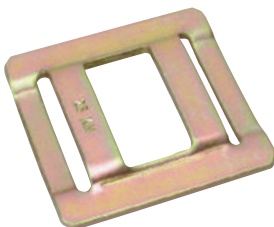
A6009AA



- 37mm
- B/S: 1,500kgs
- 114g

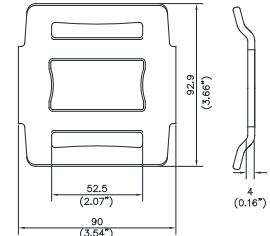
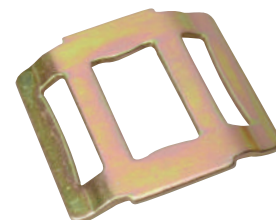
## 2" One Way Buckle

A6009AE



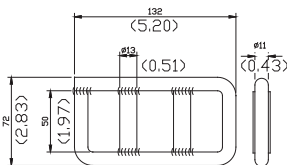
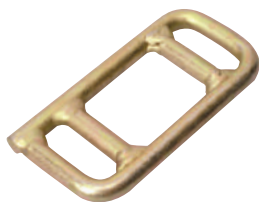
- 51.5mm
- B/S: 2,000kgs
- 179g

A6009AB



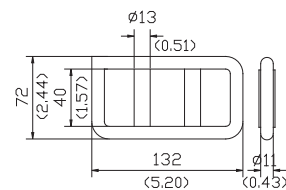
- 52mm
- B/S: 2,000kgs
- 173g

A6009AI



- 50mm
- B/S: 5,000kgs
- 352g

A6009AI



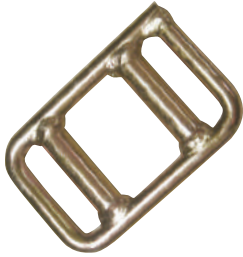
- 40mm
- B/S: 5,000kgs
- 330g

A6009BI

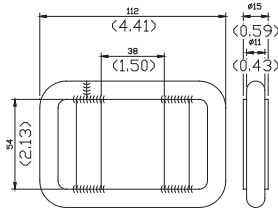
Hardware

## One Way Buckle

A6009AM

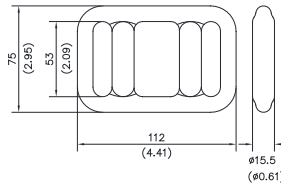


A6009AM



- 54mm
- B/S: 5,000kgs
- 365g

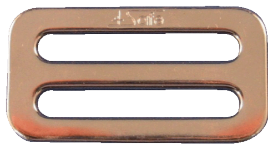
A6009BM



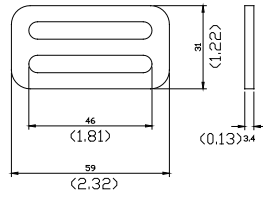
- 53mm
- B/S: 4,545kgs
- 420g

## Slide Buckle

A6010BP

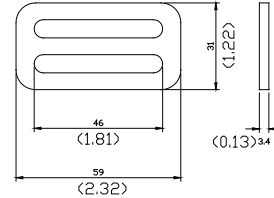


A6010AB



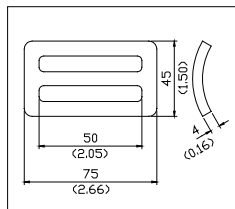
- 46mm
- B/S:1,500kgs
- Stainless

A6010BP



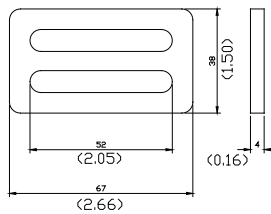
- 46mm
- B/S:1,818kgs

A6010AG



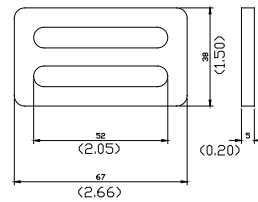
- 46mm
- B/S:1,800kgs

A6010AF



- 46mm
- B/S:2,000kgs

A6010AA



- 46mm
- B/S:2,250kgs

## Web Sling & Round Sling

### Web Sling



#### Web Sling complied with European Standard

Size(mm)	Color					
		M=1	M=0.8	M=2	B<45°	B<60°
		Vertical	Choker	Vertical Basket	β0 ~ 45°	β45 ~ 60°
30	purple	1,000	800	2,000	1,400	1,000
60	green	2,000	1,600	4,000	2,800	2,000
90	yellow	3,000	2,400	6,000	4,200	3,000
120	gray	4,000	3,200	8,000	5,600	4,000
150	red	5,000	4,000	10,000	7,000	5,000
180	brown	6,000	4,800	12,000	8,400	6,000
240	blue	8,000	6,400	16,000	11,200	8,000
300	Orange	10,000	8,000	20,000	14,000	10,000

#### Web Sling complied with American Standard

Web Sling Width (Inch)	Single Leg Hitch Types			2 Leg or Single Basket Horizontal Angles			
	Vertical (lbs)	Choker (lbs)	Vertical Basket (lbs)	Vertical (lbs)	60° (lbs)	45° (lbs)	30° (lbs)
					B<60°	B<45°	B<30°
1"	3,100	2,480	6,200	6,200	5,369	4,383	3,100
1.5"	4,700	3,760	9,400	9,400	8,140	6,646	4,700
1.75"	5,400	4,320	10,800	10,800	9,353	7,636	5,400
2"	6,200	4,960	12,400	12,400	10,738	8,767	6,200
3"	8,800	7,040	17,600	17,600	15,242	12,443	8,800
4"	11,000	8,800	22,000	22,000	19,052	15,554	11,000
5"	13,700	10,960	27,400	27,400	23,728	19,372	13,700
6"	16,500	13,200	33,000	33,000	28,578	23,331	16,500
8"	22,700	18,160	45,400	45,400	39,316	32,098	22,700
10"	28,400	22,720	56,800	56,800	49,189	40,158	28,400
12"	34,100	27,280	68,200	68,200	59,061	48,217	34,100

Note:  
The rated capacities are based on stuffer weave construction webbing with a minimum certified tensile of 9800 pounds per inch of webbing width.

### Round Sling



#### Round Sling complied with European Standard

Size (mm)	Color					
		M=1	M=0.8	M=2	M=1.4	M=1
		Straght lift	Chocked lift	Parallel	β0 ~ 45°	β45 ~ 60°
30	purple	1,000	800	2,000	1,400	1,000
60	green	2,000	1,600	4,000	2,800	2,000
90	yellow	3,000	2,400	6,000	4,200	3,000
120	gray	4,000	3,200	8,000	5,600	4,000
150	red	5,000	4,000	10,000	7,000	5,000
180	brown	6,000	4,800	12,000	8,400	6,000
240	blue	8,000	6,400	16,000	11,200	8,000
300	Orange	10,000	8,000	20,000	14,000	10,000

#### Round Sling complied with American Standard

Round Sling Size	color								
		Vertical		Choker		Vertical Basket		45° Basket	
		Lbs.	kgs	Lbs.	kgs	Lbs.	kgs	Lbs.	kgs
1	Purple	2,600	1,200	2,100	1,000	5,200	2,400	3,700	1,700
2	Green	5,300	2,400	4,200	1,900	10,600	4,800	7,500	3,400
3	Yellow	8,400	3,800	6,700	3,000	16,800	7,600	11,900	5,400
4	Tan	10,600	4,800	8,500	3,800	21,200	9,600	15,000	6,800
5	Red	13,200	6,000	10,600	4,800	26,400	12,000	18,700	8,500
6	White	16,800	7,600	13,400	6,000	33,600	15,200	23,800	10,700
7	Blue	21,200	9,600	17,000	7,600	42,400	19,200	30,000	13,600
8	Orange	25,000	11,400	20,000	9,100	50,000	22,800	35,400	16,100
9	Orange	31,000	14,100	24,800	11,300	62,000	28,200	43,800	19,900
10	Orange	40,000	18,200	32,000	14,500	80,000	36,400	56,600	25,700
11	Orange	53,000	24,100	42,400	19,300	106,000	48,200	74,900	34,100
12	Orange	66,000	30,000	52,800	24,000	132,000	60,000	93,000	42,400
13	Orange	90,000	40,900	72,000	32,700	180,000	81,800	127,300	57,800

## Rope

### Braided rope



### Static kernmantle ropes





## Harness

### Fall Protection



**- PULL TAB**  
Easy to adjust and fasten, prevent friction from end of webbing.

### PHB65KKF001

Suit for rescue, industrial, construction region, comfortable and humanity design with removable and breathable padding. For consideration of safe-add, we use reflective piping for increase visibility while working at night.



**-- QUICK-RELEASE BUCKLE**  
High tensile and fast fastening.



**- PADDING**  
Waist and leg padding using breathable and removable design.



**- REFLECTIVE**  
Increase visibility at night.

## Harness

### Fall Protection

#### PHB56XXF001

Multi-function harness with unique design of using camouflage webbing. Provide more hanging point, configured with breathable and removable padding, and more adjusted points to allow the harness suit different body type better. Lower waist padding supports pressure release on legs for aerial worker.



#### - MORE ADJUSTED POINT

Fast fastening and fit to different body type better.

#### - PULL TAB

Easy to adjust and fastening, prevent friction from end of webbing.



#### - MORE HANGING POINT

Support in Tower Climbing, Rescue, Construction region.



#### - PADDING

Breathable, removable waist and lower waist padding design.



#### - QUICK-RELEASE BUCKLE

High tensile and fast fastening.

## Harness

### Fall Protection

#### PHB31DKF001

Suit for construction region, comfortable and humanity design with consideration of easy to adjust and wearing. For the purpose of safe-add, reflective piping was used for increase visibility in low-light areas or working at night.



#### PHB31EKF001

Suit for construction region, comfortable and humanity design with easy to adjust tongue buckle legs belt. For the purpose of safe-add, reflective piping was used for increase visibility in low-light areas or working at night.

#### PHB52EHF001

Suit for confined space, rescue construction and maintenance applications. Brightly color polyester webbing, increase visibility in work place with safety compliance to workers. Easy to fit and adjust which will meet the user needs.



## Harness

## Fall Protection

**PHB51EHF001**

- 1 Dorsal D-Ring for fall arrest
- Adjustable straps
- Parachute mating buckles
- Impact indicator
- Nylon or polyester material available

**PHA31EHF001**

- 1 Dorsal D-Ring for fall arrest
- Adjustable straps
- Parachute mating buckles
- Nylon or polyester material available

**PHB53EHF001**

- 1 Dorsal D-Ring for fall arrest
- 2 Side D- Rings for work positioning
- Adjustable Straps
- Parachute mating buckles
- Impact indicator
- Nylon or polyester material available

## Harness

### Fall Protection



#### PHB53EHF014

- 1 Dorsal D-Ring for fall arrest
- 2 Shoulder D- Rings for confined space
- Adjustable Straps
- Parachute mating buckles
- Impact indicator
- Nylon or polyester material available

#### PHB51EHF004

- 1 Dorsal D-Ring for fall arrest
- 5 Point adjustable
- Parachute mating buckles
- Polyester webbing



#### PHB32HEF005

- 1 Dorsal D-Ring for fall arrest
- Adjustable straps
- Parachute mating buckles
- Nylon or polyester material available

## Harness

### Fall Protection



#### PHB53EHF029

- 1 Dorsal D-Ring for fall arrest
- 2 Front D-Rings for ladder climbing
- Adjustable straps
- Parachute mating buckles
- Nylon or polyester material available

#### PHB63EHF001

- 1 Dorsal D-Ring for fall arrest
- 2 Side D-Rings for climbing
- 6 Point adjustable
- Comfortable waist pad
- Parachute mating buckles
- Polyester webbing



#### PMB31KKF001

- Innovative ergonomic waist and legs
- Adjustable leg loops
- 4 quick buckles
- 4 gear loops for the material



## Harness & Lifeline

### Fall Protection

#### PHB51KKL005

- Lightly padded and flexible for added comfort and ease of movement
- Easily adjustable shoulder straps ensure correct fit and extra comfort
- Lightweight padded belt



### Lifeline



#### Verticle lifeline

Vertical rope lifeline constructed of 5/8 inch PE or Nylon rope. Comes with a double locking snap hook and manual rope adjuster attached (optional). Available in a variety of lengths from 25 to 200 feet.

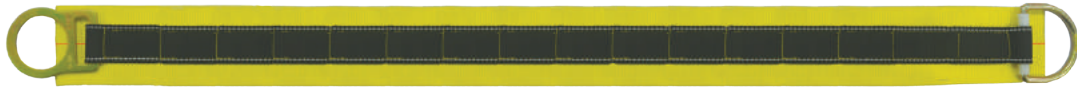
#### Horizontal Lifeline



Horizontal Lifeline for single & double persons  
2" Ratchet w/carabiners and length of Webbing is variable.

## Anchor Strap & Beam

### Anchor Strap

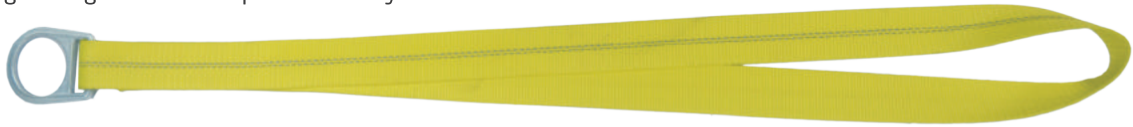


#### Cross Arm Anchor Strap

- Can be used for a variety of applications
- Available in sizes 4', 6', and 8'
- Pass through design allows quick and easy attachment

#### Concrete Anchor Strap

- Can be used for a variety of applications
- Pass through design allows for quick and easy attachment



### Beam

#### Sliding Beam Anchor-Horizontal

- Fit 3 1/2" to 11" wide and up to 1" in thickness
- Shaft Breaking Load: 9,000lbs
- D-Rings: 5000lb. Minimum tensile strength



#### Fixed Beam Anchor-Vertical

- Fit 3 1/2" to 11" wide and up to 1 1/2" to 2" in thickness
- Shaft Breaking Load: 9,000lbs
- D-Rings: 5000lb. Minimum tensile strength



### Roofer's Kit

#### HARNES



5 Pt. Pass-Through (Univ or XL)

#### CONNECTOR



Rope Grab w/ 50' (15.24m) Lifeline

#### ANCHORAGE CONNECTOR



Reusable Roof Anchor

PPI-4safe Roofer's Kit, Universal Fit

#### Roofer's kit include

- Full Body Safety Harness feature with two leg buckles, a chest strap, a dorsal D-ring and 3 adjustment.
- Rope Grab w/50' lifeline, attached to the D-ring on the back of the worker's harness by a 0.8m shock-absorbing lanyard. The rope grab comes complete with a snap hook at one end.
- Reusable Roof Anchor
- Also included with 16D sized nails.



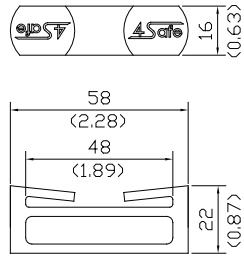


### Miscellaneous

#### Plastic Webbing Collector

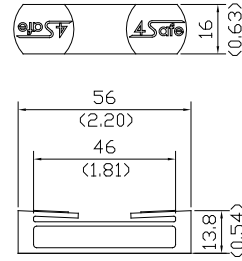


A8011BB



- Plastic Webbing Collector  
- Weight: 7g

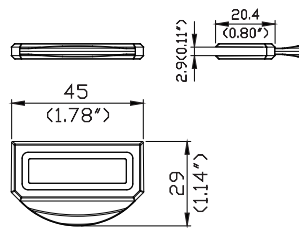
A8011CB



- Plastic Webbing Collector  
- Weight: 4g



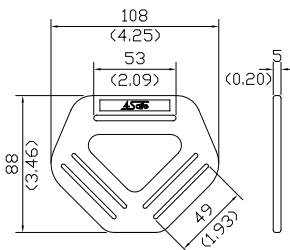
A8003AF



- Plastic Webbing Collector  
- Weight: 2.5g

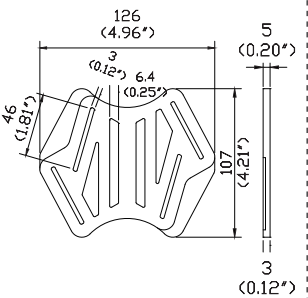
#### Plastic Back Pad

A8011AE



- Plastic Back Pad  
- Weight: 29.5g

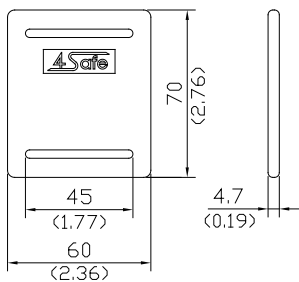
A8011DE



- Plastic Back Pad  
- Weight: 27g

#### Plastic Webbing Guide

A6010AX



- Plastic Webbing Guide  
- Weight: 16.5g

#### Comfort Back Pad

QC35001AD



#### Comfort Waist Pad

QC35002AD



## Self-Retracting Lifelines (SRLs)

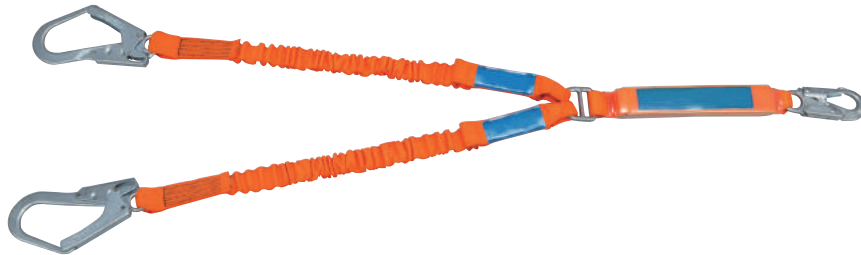


### PA7701

Self Retracting Lifelines allows worker mobility while providing fall protection. The lifeline will automatically lock when weight is suddenly applied to it. Offered in aluminum, plastic, rope and web, from 7 to 75 feet in length.



## Lanyard



### PLB2DADYCE001

The fall arrest lanyard offers increased security, combining the flexibility of a full length fall arrest lanyard with the adjustment required for work restraint.

### PLB2DADNCK001



### PLB1AADYCE002



### PLB1ADDYCE001



### PLB2DADYCE002





# Code Number Index

Code Number  
Index

Item Number	Page
1000	F-01
1001	A-01
1001	F-01
1002	F-01
1006	F-01
1006	F-02
1009	F-02
1011	A-01
1011	F-02
1032	F-02
1033	F-01
1036	F-01
1061	F-02
1062	F-02
1502	F-03
1503	F-02
1505	F-02
1506	A-01
1506	F-03
1507	F-03
1509	A-01
1509	F-03
2002	F-04
2005	F-03
2005	F-05
2006	F-03
2007	F-03
2008	A-01
2008	F-04
2011	F-05
2013	F-06
2015	A-02
2015	F-06
2016	A-02
2016	F-05
2020	F-05
2022	F-06
2025	A-01
2025	F-04
2028	F-05
2033	A-02
2033	F-06
2301	A-02
2301	F-07
2303	F-07
2305	F-07
2404	A-02
2404	F-07
2405	F-07
3001	F-24
3002	F-27

Item Number	Page
3004	F-28
3004	F-30
3005	F-33
3007	F-14
3007	F-16
3008	F-15
3009	F-15
3010	F-24
3010	F-29
3011	F-29
3015	F-35
3016	F-24
3017	F-25
3018	F-24
3021	F-28
3025	F-32
3025	F-34
3027	F-16
3028	F-31
3034	F-35
3035	F-35
3045	F-34
3055	F-32
3057	F-34
3095	C-04
3104	F-18
3109	F-19
3110	F-19
3112	F-20
3113	F-19
3114	F-20
3201	F-14
3202	F-14
3203	F-14
3204	F-14
3302	F-21
3303	F-21
3304	F-21
3305	F-21
3306	F-21
3307	F-21
3308	F-21
3309	F-21
3310	F-21
3311	F-21
3314	F-21
3315	F-21
3316	F-21
3317	F-21
3403	F-18
3409	F-18

Item Number	Page
3413	F-18
3416	F-18
3417	F-18
3418	F-18
3419	F-18
3504	F-16
3504	F-32
3506	F-22
3508	F-21
3508	F-21
3509	F-22
3510	F-33
3601	F-31
3701	F-31
3802	F-19
3802	F-22
4001	A-03
4001	F-08
4002	F-08
4003	A-03
4003	F-08
4005	F-09
4006	F-11
4007	A-03
4007	F-10
4008	F-10
4011	F-08
4012	F-08
4013	F-10
4014	F-08
4015	F-09
4016	F-09
4018	F-08
4019	F-10
4021	A-03
4021	F-09
4025	F-10
4026	F-09
5004	F-12
5004	F-13
5008	F-13
5009	F-12
5010	F-12
5012	F-13
5905	F-12
6001	C-01
6002	C-01
6004	C-03
6005	C-03
6007	C-03
6008	F-04

Item Number	Page
6009	F-36
6010	F-23
6010	F-37
6010	I-09
6011	C-03
6012	F-23
6013	C-02
6016	C-04
6017	C-02
7001	B-01
7040	B-02
7041	B-01
7042	B-01
7100	B-04
7200	B-04
7301	C-01
7401	E-01
7402	E-01
7701	I-10
8001	C-04
8003	I-09
8011	I-09
9001	F-13
35001	I-09
35002	I-09



A series of horizontal lines for writing, forming a large ruled area on the page.

Our superior products utilize the latest technology to ensure high standards.

## Durability

We will continually build up our knowledge and skills, and keep abreast with industry developments, so that we can become a resilient and competitive player.

## Reliability



## Craftsmanship

4Safe has a keen eye for detail and quality. We focus on small touches with big impact.

## Collaborative

Together, we work with you to understand explore possibilities and new ways to achieve your vision.

## Certificate of Approval

Due to the effort in quality control, Pacific Precise are honored by certificates of ISO 9001, GS and TUV, We also provide Product Liability Insurance. As a result, when you look for the best Value, Pacific Precise will be your right choice.

